

PRESS BRAKE TOOLING

Quality from the Cutting Edge of Fabrication

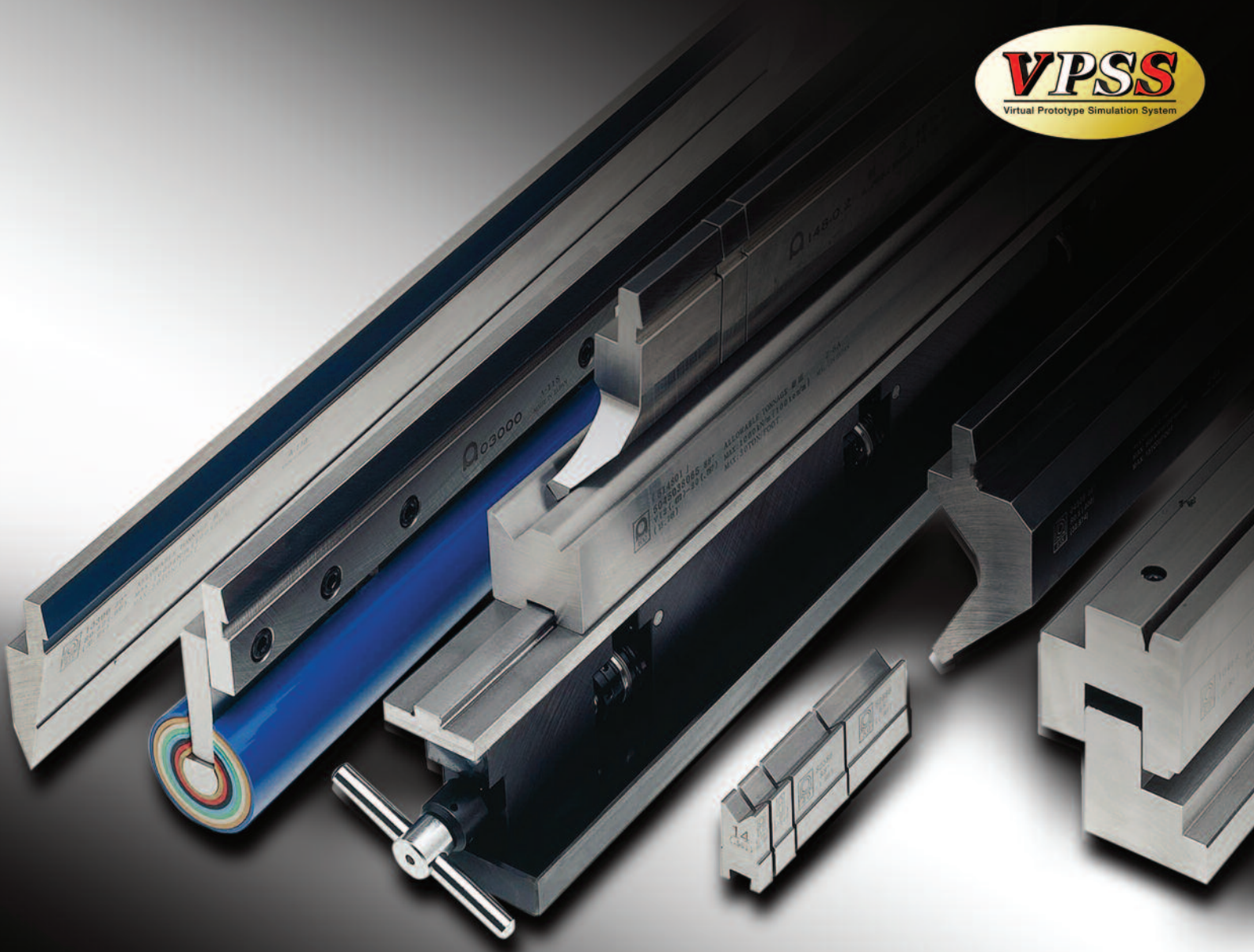


TABLE OF CONTENTS

PUNCH HOLDERS	-----	3
PUNCHES	-----	4
DIES	-----	14
POLYURETHANE DIES & DIE HOLDERS	-----	34
STANDARD OFFSET TOOLS	-----	35
HEMMING PUNCH & DIES	-----	36
ASTRO ROBOTIC TOOLING	-----	37
ONE TOUCH HOLDER & ACCESSORIES	-----	38
PRESS BRAKE ACCESSORIES	-----	39
REPLACEMENT PARTS	-----	42
AIR BENDING FORCE CHART	-----	43

Features of Amada Tooling

High Precision – AMADA tooling is hardened and ground to give you optimal press brake performance with all critical tolerances ground to within 0.0008" (.02 mm). Amada precision performance helps eliminate secondary handling to correct errors while also helping to decrease bending costs. In addition, Amada tooling is through-hardened, providing you with long lasting accuracy superior to conventional tooling.

Standardized – Amada tooling is available in Long (32.87") and Short (16.34") lengths, providing for easy, one-operator set-up.

Sectionalized – Amada tooling is sectionalized as follows for convenience and efficiency:

Punch (Inches): .39 + .59 + .79 + 1.57 + 1.97 + 3.94 + 3.94 + 7.87 + 11.81 = 32.87"

Die (Inches): .39 + .59 + .79 + 1.57 + 1.97 + 3.94 + 7.87 + 15.75 = 32.87"

Variety of Standardized Shapes – Amada tooling is available in a wide variety of shapes to meet almost any forming need. You're assured of finding the right tooling to perform your bending operation in the most precise, efficient manner.

Interchangeable – Amada tooling is designed for interchangeable use on all Amada press brakes.

Amada press brake dies are hardened thoroughly at 65-69 HRC. Our patented Amanit process combines optimum surface hardness, lubricity and grinding to the highest tolerances in the industry.

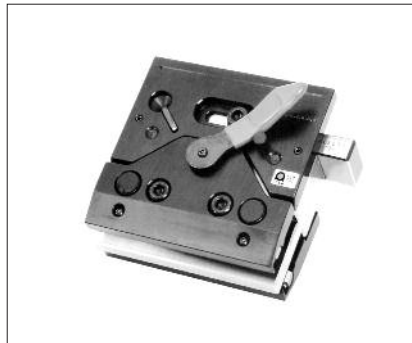
These manufacturing processes not only ensure that the tooling provides optimum press brake performance, but also maximizes tool durability and component accuracy far better than that offered by conventional press brake tooling.

Amanit coding is provided at no additional charge and is standard for all Amada press brake dies.

COMBINATION OF DIES & PUNCHES

<p>1 90° BENDING (27GA —11GA)</p> <p>STANDARD DIE HOLDER</p>	<p>2 90° BENDING STRAIGHT PUNCH (27GA —14GA)</p> <p>STANDARD DIE HOLDER</p>	<p>3 90° BENDING GOOSENECK (27GA —8GA)</p> <p>STANDARD DIE HOLDER</p>	<p>4 90° BENDING DOOR SASH (27GA —14GA)</p>
<p>5 90° BENDING DOOR SASH (27GA —14GA)</p>	<p>6 90° BENDING (3/8"—1/2")</p>	<p>7 RADIUS BENDING (18GA —16GA)</p>	<p>8 RADIUS BENDING URETHANE DIE (27GA —11GA)</p>
<p>9 ACUTE ANGLE BENDING (27GA —14GA)</p> <p>STANDARD DIE HOLDER</p>	<p>10 ACUTE ANGLE BENDING (14GA —10GA)</p>	<p>11 ACUTE ANGLE BENDING (10GA —6GA)</p>	<p>12 NARROW BOX BENDING</p>
<p>13 HEMMING (27GA —16GA)</p>	<p>14 HEMMING (27GA —11GA)</p>	<p>15 MARK FREE BENDING</p>	<p>16 MATCHING 2-V DIES WITH SECTIONALIZED 2-V DIES</p>

AMADA ONE TOUCH PUNCH HOLDER

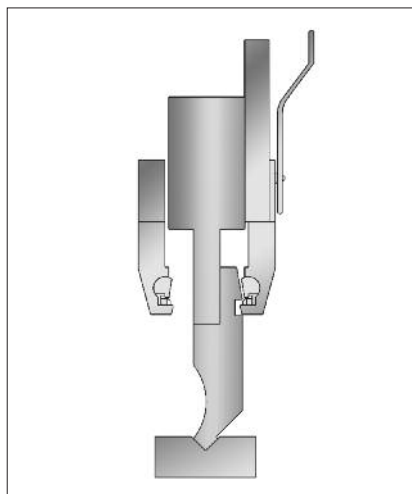


Amada's One Touch Holder and tooling allows the brake operator to change punches on the press brake quickly and safely without the need for a wrench. The patented One Touch design allows you to decrease your tooling changeover time, thereby increasing your bending productivity. One Touch Tool Holders and accessories are available for all Amada press brake models.

Fast and Easy Tool Set-up

With the One Touch Punch Holder, installation is a simple two-step process.

- Simply slide the grooved punch into the One Touch Punch Holder.
- Turn the lever to secure the punch in the One Touch Punch Holder.



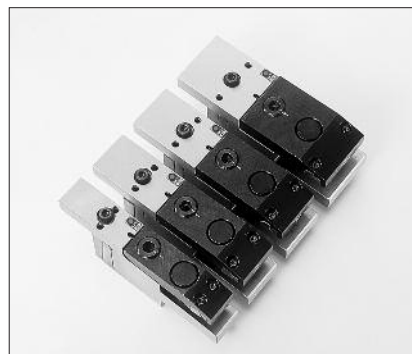
U.S. Patents: No. 5,513,514 No. 5,685,191 No. 5,642,642
No. 5,511,407 No. 5,619,885

ORDER CODE NUMBER
902000

- Reduce tooling set-up time
- Increase safety with the drop-prevention feature
- Insure properly tightened tools every time
- Increase productivity of the bending process
- No tools required to tighten punch

For use on ZII style RG model press brake and all FBD, HFB & HFE model press Brakes.

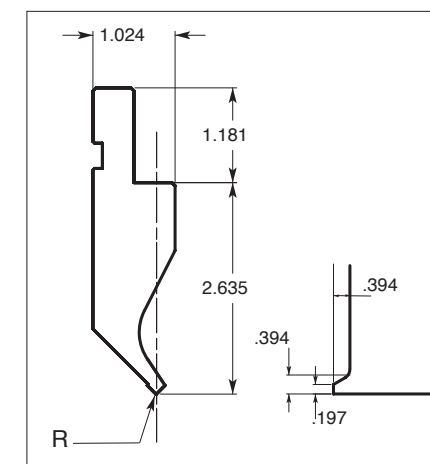
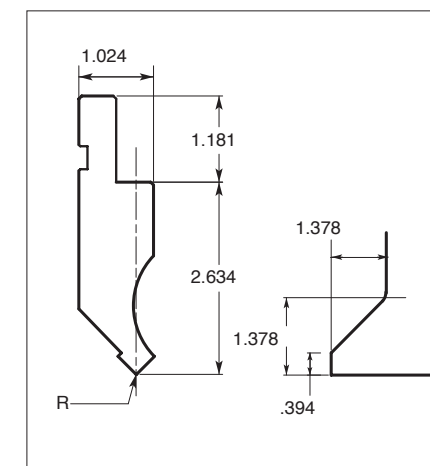
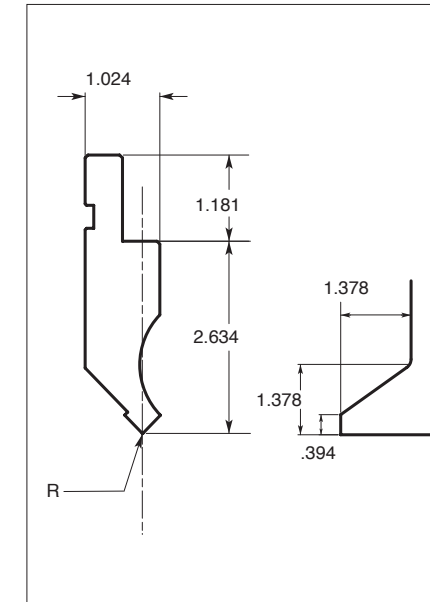
NARROW DISTANCE PIECE SET



ORDER CODE NUMBER
908000

These narrow punch holders replace the standard One Touch punch holder when the standard size of punch holder interferes with the part being formed. These allow clearance for side flanges that would normally hit the standard punch holder, while holding the punch securely during use. Set contains widths of 25mm, 35mm, 40mm and 50mm.

88° & 90° PUNCHES



TOOL NUMBER	ORDER CODE NUMBER		EDGE		ALLOWABLE TONNAGE (TON/FOOT)
	STANDARD	ONE TOUCH	RADIUS (R)	ANGLE	
4 SOLID	60402	00402	.008	88°	30
	60408	00408	.030		
	60415	00415	.060		
	60423	00423	.090		
	60430	00430	.120		
148 SECTIONALIZED	64802	14802	.008	88°	14
	64808	14808	.030		
	64815	14815	.060		
	64823	14823	.090		
	64830	14830	.120		
	64848	14848	.188		

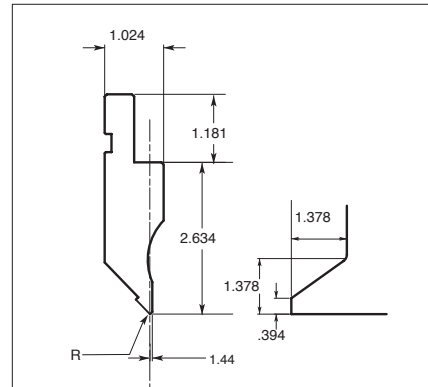
TOOL NUMBER	ORDER CODE NUMBER		EDGE		ALLOWABLE TONNAGE (TON/FOOT)
	STANDARD	ONE TOUCH	RADIUS (R)	ANGLE	
16 SOLID	61602	01602	.008	90°	30
	61608	01608	.030		
	61615	01615	.060		
	61623	01623	.090		
	61630	01630	.120		
147 SECTIONALIZED	64702	14700	.008	90°	14
	64708	14708	.030		
	64715	14715	.060		
	64723	14723	.090		
	64730	14730	.120		

TOOL NUMBER	ORDER CODE NUMBER		EDGE		ALLOWABLE TONNAGE (TON/FOOT)
	STANDARD	ONE TOUCH	RADIUS(R)	ANGLE	
116 SOLID	71602	11600	.008	90°	6
116SS* SECTIONALIZED	71682	11680	.008	90°	3

Hardness HRC is 45-49.

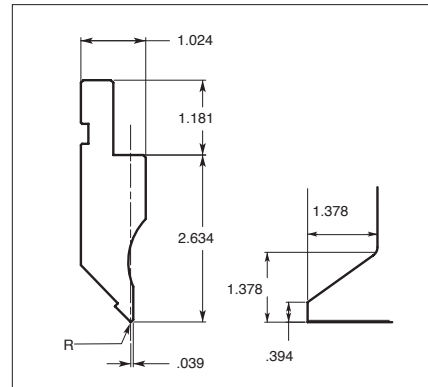
* Semi-Standard Length (Ear Type): .39 + .59 + .79 + 1.57 + 1.97 + 3.94 + 3.94 + 6.50 + 11.81 + = 31.50" (1 set)

88° & 90° NARROW RELIEF PUNCH



TOOL NUMBER	ORDER CODE NUMBER		EDGE		ALLOWABLE TONNAGE (TON/FOOT)
	STANDARD	ONE TOUCH	RADIUS(R)	ANGLE	
60492 SOLID	60492	00490	.008	88°	24
64892 SECTIONALIZED	64892	14890	.008	88°	12

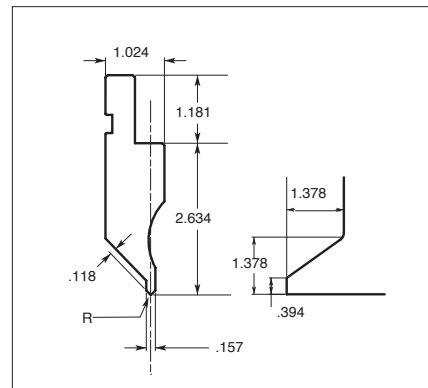
Hardness HRC is 45-49.



TOOL NUMBER	ORDER CODE NUMBER		EDGE		ALLOWABLE TONNAGE (TON/FOOT)
	STANDARD	ONE TOUCH	RADIUS(R)	ANGLE	
61692 SOLID	61692	01690	.008	90°	24
64792 SECTIONALIZED	64792	14790	.008	90°	12

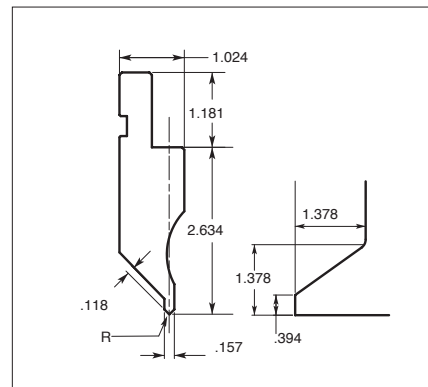
Hardness HRC is 45-49.

88° & 90° MULTI RELIEF NARROW PUNCH



TOOL NUMBER	ORDER CODE NUMBER		EDGE		ALLOWABLE TONNAGE (TON/FOOT)
	STANDARD	ONE TOUCH	RADIUS(R)	ANGLE	
60482 SOLID	60482	00480	.008	88°	12
64882 SECTIONALIZED	64882	14882	.008	88°	6

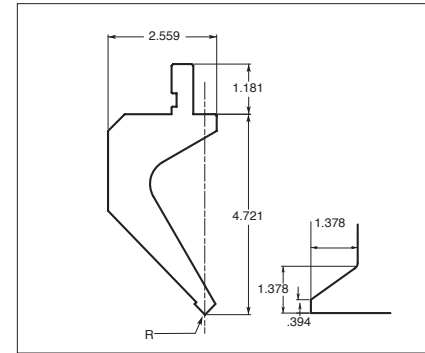
Hardness HRC is 45-49.



TOOL NUMBER	ORDER CODE NUMBER		EDGE		ALLOWABLE TONNAGE (TON/FOOT)
	STANDARD	ONE TOUCH	RADIUS(R)	ANGLE	
61682 SOLID	61682	01680	.008	90°	12
64782 SECTIONALIZED	64782	14780	.008	90°	6

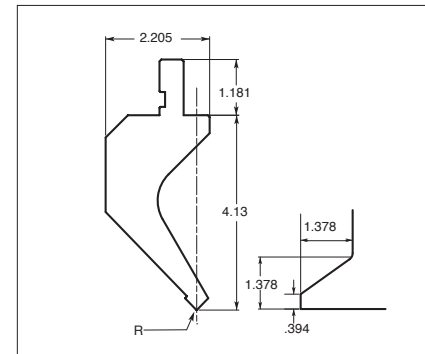
Hardness HRC is 45-49.

88° & 90° GOOSENECK PUNCHES



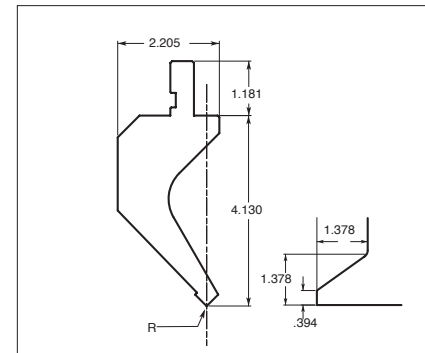
TOOL NUMBER	ORDER CODE NUMBER		EDGE		ALLOWABLE TONNAGE (TON/FOOT)
	STANDARD	ONE TOUCH	RADIUS(R)	ANGLE	
47 SOLID	74702	04702	.008	88°	15
52 SECTIONALIZED	75202	05202	.008	88°	14

Hardness HRC is 45-49.



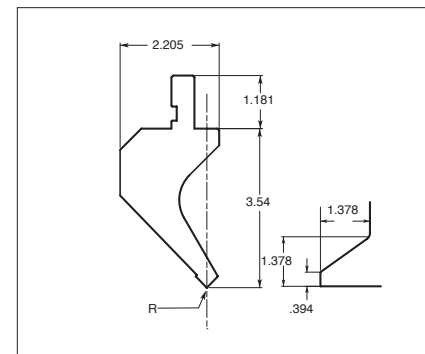
TOOL NUMBER	ORDER CODE NUMBER		EDGE		ALLOWABLE TONNAGE (TON/FOOT)
	STANDARD	ONE TOUCH	RADIUS(R)	ANGLE	
45 SOLID	64502	04502	.008	88°	15
	64508	04508	.030		
	64515	04515	.060		
50 SECTIONALIZED	64530	04530	.120	88°	14
	65002	05002	.008		
	65008	05008	.030		
	65015	05015	.060		
65030	05030	.120			

Hardness HRC is 45-49.



TOOL NUMBER	ORDER CODE NUMBER		EDGE		ALLOWABLE TONNAGE (TON/FOOT)
	STANDARD	ONE TOUCH	RADIUS(R)	ANGLE	
46 SOLID	64602	04600	.008	90°	15
51 SECTIONALIZED	65102	05102	.008	90°	14

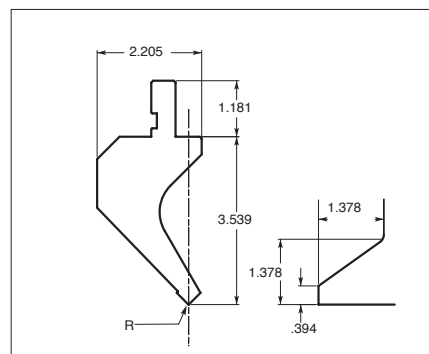
Hardness HRC is 45-49.



TOOL NUMBER	ORDER CODE NUMBER		EDGE		ALLOWABLE TONNAGE (TON/FOOT)
	STANDARD	ONE TOUCH	RADIUS(R)	ANGLE	
452 SOLID	65202	45202	.008	88°	21
	65208	45208	.030		
	65215	45215	.060		
150 SECTIONALIZED	65230	45230	.120	88°	14
	75002	15002	.008		
	75008	15008	.030		
	75015	15015	.060		
75030	15030	.120			

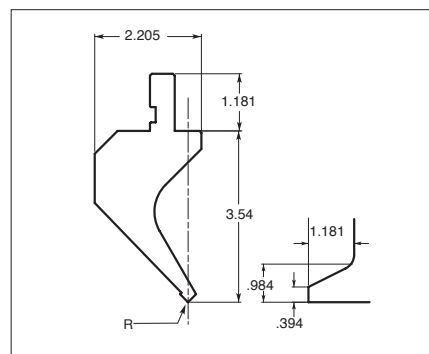
Hardness HRC is 45-49.

88° & 90° GOOSENECK PUNCHES



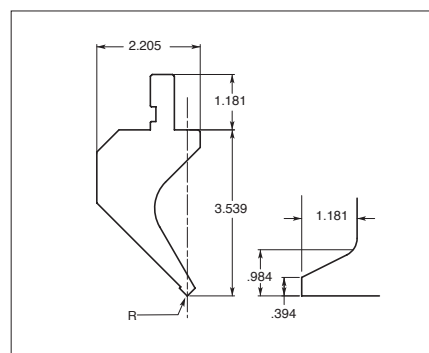
TOOL NUMBER	ORDER CODE NUMBER		EDGE		ALLOWABLE TONNAGE (TON/FOOT)
	STANDARD	ONE TOUCH	RADIUS(R)	ANGLE	
462 SOLID	66202	46202	.008	90°	21
151 SECTIONALIZED	75102	15102	.008	90°	14

Hardness HRC is 45-49.



TOOL NUMBER	ORDER CODE NUMBER		EDGE		ALLOWABLE TONNAGE (TON/FOOT)
	STANDARD	ONE TOUCH	RADIUS(R)	ANGLE	
453 SOLID	65302	45302	.008	88°	15
	65308	45308	.030		
	65315	45315	.060		
	65330	45330	.120		
155 SECTIONALIZED	65502	15502	.008	88°	9
	65508	15508	.030		

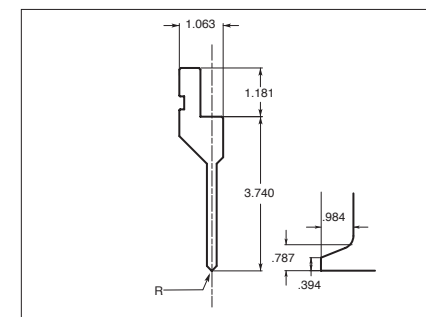
Hardness HRC is 45-49.



TOOL NUMBER	ORDER CODE NUMBER		EDGE		ALLOWABLE TONNAGE (TON/FOOT)
	STANDARD	ONE TOUCH	RADIUS(R)	ANGLE	
463 SOLID	66302	46302	.008	90°	15
156 SECTIONALIZED	65602	15602	.008	90°	9

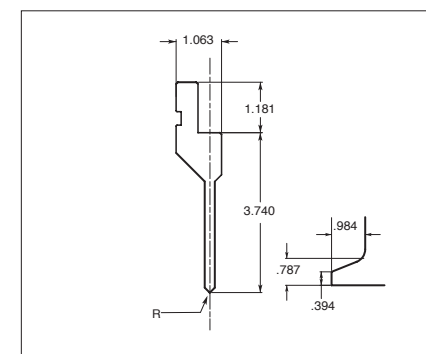
Hardness HRC is 45-49.

88° & 90° SASH PUNCHES



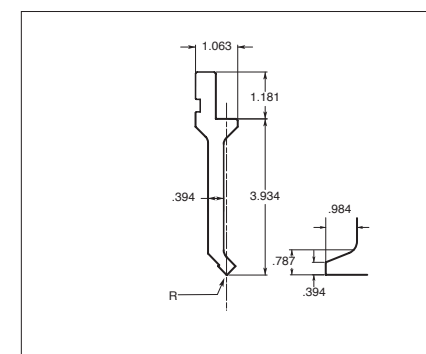
TOOL NUMBER	ORDER CODE NUMBER		EDGE		ALLOWABLE TONNAGE (TON/FOOT)
	STANDARD	ONE TOUCH	RADIUS(R)	ANGLE	
109 SOLID	60902	10902	.008	88°	15
107 SECTIONALIZED	60700	10700	.008	88°	3.7

Hardness HRC is 45-49.



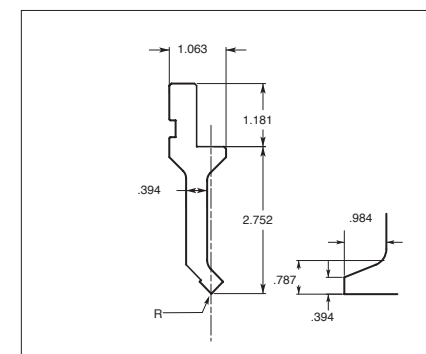
TOOL NUMBER	ORDER CODE NUMBER		EDGE		ALLOWABLE TONNAGE (TON/FOOT)
	STANDARD	ONE TOUCH	RADIUS(R)	ANGLE	
108 SOLID	70802	10800	.008	90°	15
106 SECTIONALIZED	60600	10600	.008	90°	3.7

Hardness HRC is 45-49.



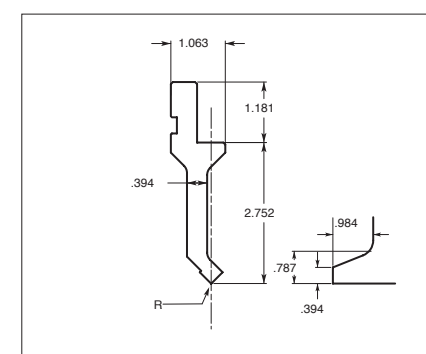
TOOL NUMBER	ORDER CODE NUMBER		EDGE		ALLOWABLE TONNAGE (TON/FOOT)
	STANDARD	ONE TOUCH	RADIUS(R)	ANGLE	
202 SOLID	60200	20200	.008	88°	9
20280 SECTIONALIZED	60282	20280	.008	88°	5

Hardness HRC is 45-49.



TOOL NUMBER	ORDER CODE NUMBER		EDGE		ALLOWABLE TONNAGE (TON/FOOT)
	STANDARD	ONE TOUCH	RADIUS(R)	ANGLE	
200 SOLID	60002	20002	.008	88°	9
200SS* SECTIONALIZED	60082	20080	.008	88°	5

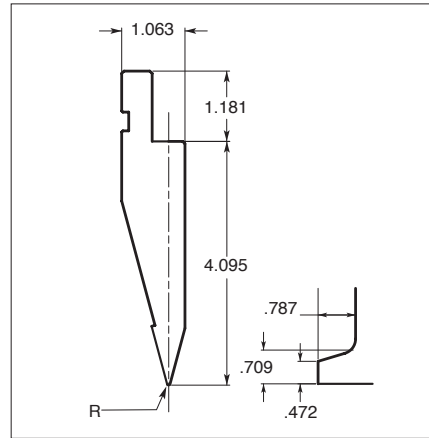
* Semi-Standard Length (Ear Type): .39 + .59 + .79 + 1.57 + 1.97 + 3.94 + 3.94 + 6.50 + 11.81 = 31.50" (1 set)



TOOL NUMBER	ORDER CODE NUMBER		EDGE		ALLOWABLE TONNAGE (TON/FOOT)
	STANDARD	ONE TOUCH	RADIUS(R)	ANGLE	
201 SOLID	60102	20102	.008	90°	9
201SS* SECTIONALIZED	60182	20100	.008	90°	5

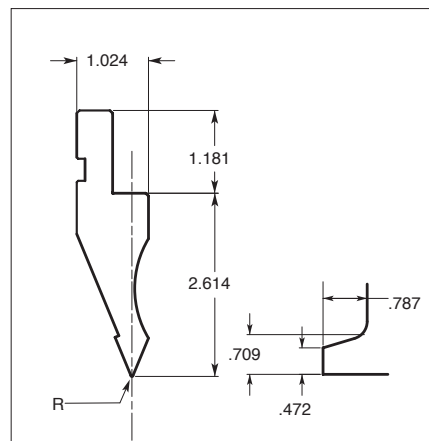
* Sem-Standard Length (Ear Type): .39 + .59 + .79 + 1.57 + 1.97 + 3.94 + 3.94 + 6.50 + 11.81 = 31.50" (1 set)

ACUTE ANGLE PUNCHES



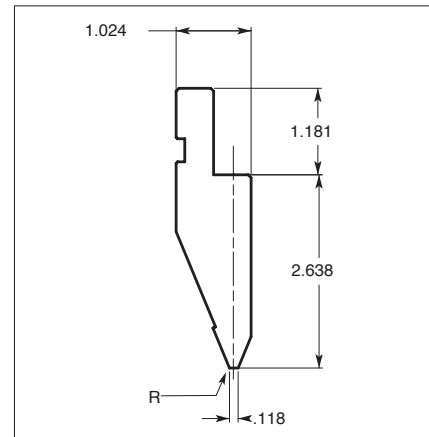
TOOL NUMBER	ORDER CODE NUMBER		EDGE		ALLOWABLE TONNAGE (TON/FOOT)
	STANDARD	ONE TOUCH	RADIUS(R)	ANGLE	
210 SOLID	61000	21000	.026	30°	30
210SS* SECTIONALIZED	61086	21080	.026	30°	9

* Semi-Standard Length (Ear Type): .39 + .59 + .79 + 1.57 + 1.97 + 3.94 + 3.94 + 6.50 + 11.81 = 31.50" (1 set)
Hardness HRC is 45-49.



TOOL NUMBER	ORDER CODE NUMBER		EDGE		ALLOWABLE TONNAGE (TON/FOOT)
	STANDARD	ONE TOUCH	RADIUS(R)	ANGLE	
8 SOLID	60800	00800	.015	45°	18
49 SECTIONALIZED	64902	04902	.015	45°	9

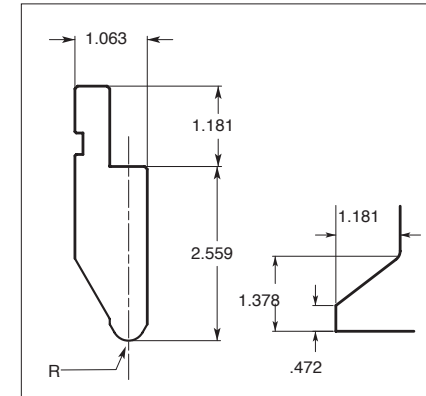
Hardness HRC is 45-49.



TOOL NUMBER	ORDER CODE NUMBER		EDGE	ALLOWABLE TONNAGE (TON/FOOT)
	STANDARD	ONE TOUCH	ANGLE	
215	71500	21500	45°	30

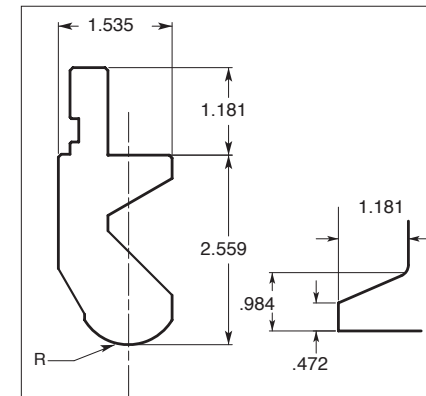
Hardness HRC is 45-49.

RADIUS PUNCHES



TOOL NUMBER	ORDER CODE NUMBER		EDGE		ALLOWABLE TONNAGE (TON/FOOT)
	STANDARD	ONE TOUCH	RADIUS(R)	ANGLE	
3 SOLID	60300	00300	.240	60°	30
138 SECTIONALIZED	73800	13800	.240	60°	30

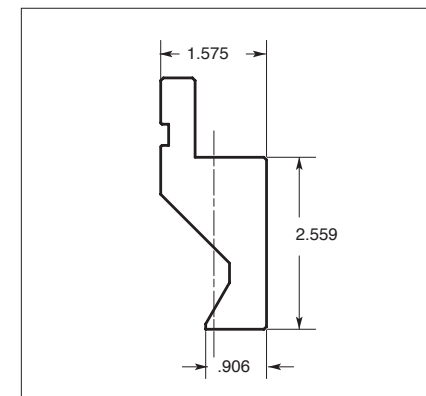
Hardness HRC is 45-49.



TOOL NUMBER	ORDER CODE NUMBER		EDGE (R)	ALLOWABLE TONNAGE (TON/FOOT)
	STANDARD	ONE TOUCH		
230 SOLID	63000	23000	0.689	30
231 SECTIONALIZED	63100	23100	0.689	30

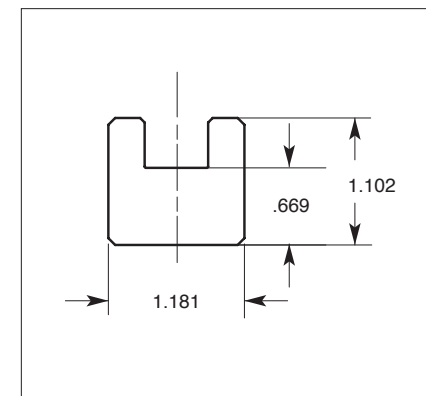
Hardness HRC is 45-49.

FLATTENING PUNCHES



TOOL NUMBER	ORDER CODE NUMBER		ALLOWABLE TONNAGE (TON/FOOT)
	STANDARD	ONE TOUCH	
220	62000	22000	30

Hardness HRC is 45-49.

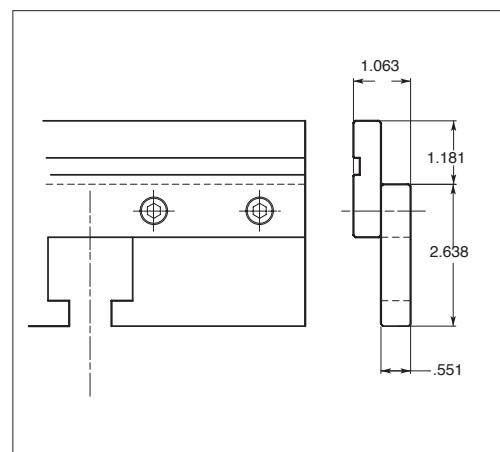


TOOL NUMBER	ORDER CODE NUMBER	ALLOWABLE TONNAGE (TON/FOOT)
20	02000	30

Mounts in #15 Punch Holder (shown on next page)
Hardness HRC is 23-28.

PUNCH HOLDERS & RADIUS RULERS

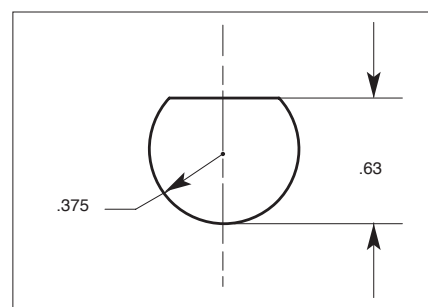
PUNCH HOLDER



TOOL NUMBER	ORDER CODE NUMBER		ALLOWABLE TONNAGE (TON/FOOT)
	STANDARD	ONE TOUCH	
15	61500	01500	—

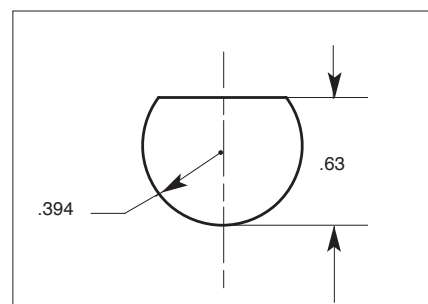
Hardness HRC is 23-28.

RADIUS RULERS



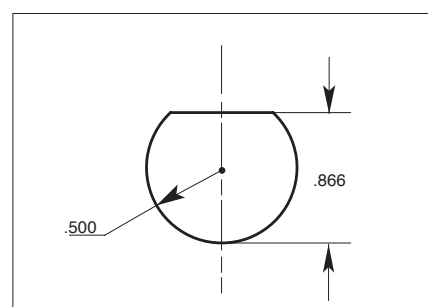
TOOL NUMBER	ORDER CODE NUMBER	EDGE (R)	ALLOWABLE TONNAGE (TON/FOOT)
01737	01737	.375	30

Hardness HRC is 23-28.
Mounts on #15 Punch Holder.



TOOL NUMBER	ORDER CODE NUMBER	EDGE (R)	ALLOWABLE TONNAGE (TON/FOOT)
01710	01710	.394	30

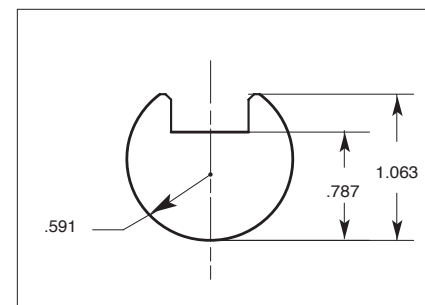
Hardness HRC is 23-28.
Mounts on #15 Punch Holder.



TOOL NUMBER	ORDER CODE NUMBER	EDGE (R)	ALLOWABLE TONNAGE (TON/FOOT)
01750	01750	.500	30

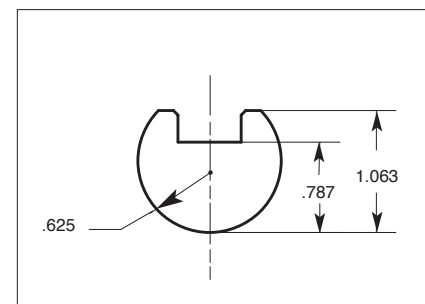
Hardness HRC is 23-28.
Mounts on #15 Punch Holder.

PUNCH HOLDERS & RADIUS RULERS



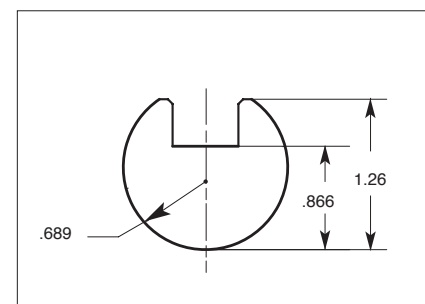
TOOL NUMBER	ORDER CODE NUMBER	EDGE (R)	ALLOWABLE TONNAGE (TON/FOOT)
01715	01715	.591	30

Hardness HRC is 23-28.
Mounts on #15 Punch Holder.



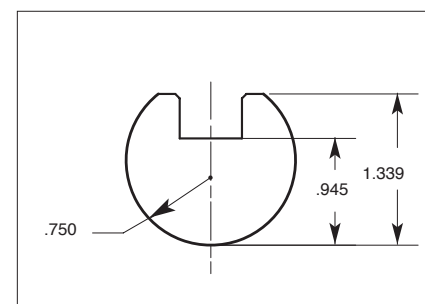
TOOL NUMBER	ORDER CODE NUMBER	EDGE (R)	ALLOWABLE TONNAGE (TON/FOOT)
01762	01762	.625	30

Hardness HRC is 23-28.
Mounts on #15 Punch Holder.



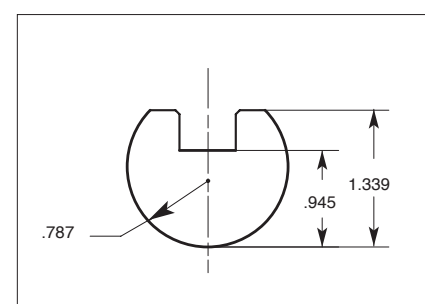
TOOL NUMBER	ORDER CODE NUMBER	EDGE (R)	ALLOWABLE TONNAGE (TON/FOOT)
01717	01717	.689	30

Hardness HRC is 23-28.
Mounts on #15 Punch Holder.



TOOL NUMBER	ORDER CODE NUMBER	EDGE (R)	ALLOWABLE TONNAGE (TON/FOOT)
01775	01775	.750	30

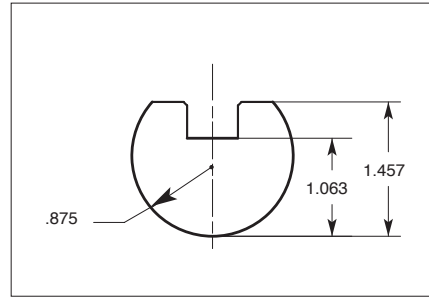
Hardness HRC is 23-28.
Mounts on #15 Punch Holder.



TOOL NUMBER	ORDER CODE NUMBER	EDGE (R)	ALLOWABLE TONNAGE (TON/FOOT)
01720	01720	.787	30

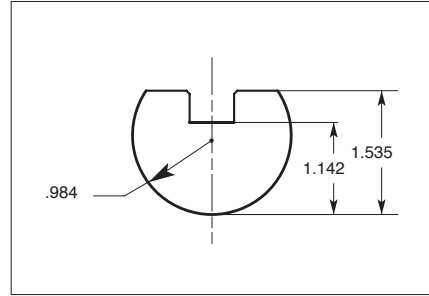
Hardness HRC is 23-28.
Mounts on #15 Punch Holder.

PUNCH HOLDERS & RADIUS RULERS



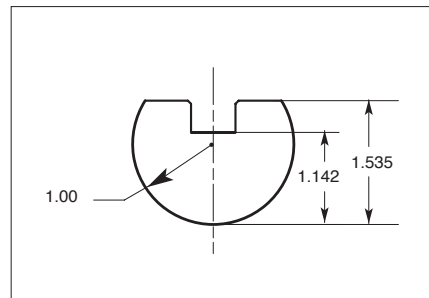
TOOL NUMBER	ORDER CODE NUMBER	EDGE (R)	ALLOWABLE TONNAGE (TON/FOOT)
01787	01787	.875	30

Hardness HRC is 23-28.
Mounts on #15 Punch Holder.



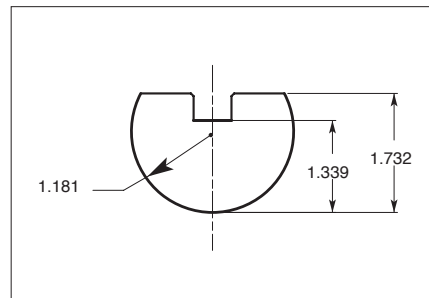
TOOL NUMBER	ORDER CODE NUMBER	EDGE (R)	ALLOWABLE TONNAGE (TON/FOOT)
01725	01725	.984	30

Hardness HRC is 23-28.
Mounts on #15 Punch Holder.



TOOL NUMBER	ORDER CODE NUMBER	EDGE (R)	ALLOWABLE TONNAGE (TON/FOOT)
01700	01700	1.000	30

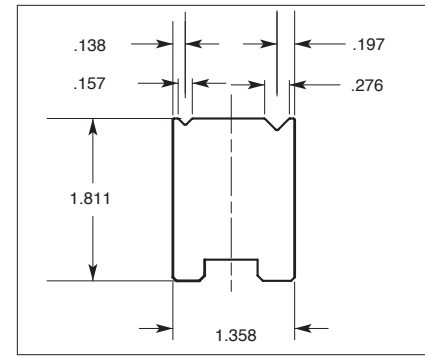
Hardness HRC is 23-28.
Mounts on #15 Punch Holder.



TOOL NUMBER	ORDER CODE NUMBER	EDGE (R)	ALLOWABLE TONNAGE (TON/FOOT)
01730	01730	1.181	30

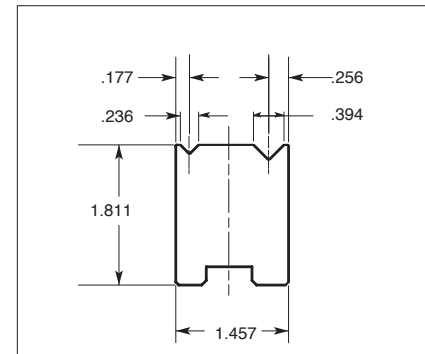
Hardness HRC is 23-28.
Mounts on #15 Punch Holder.

QUICK CHANGE 2 "V" DIES



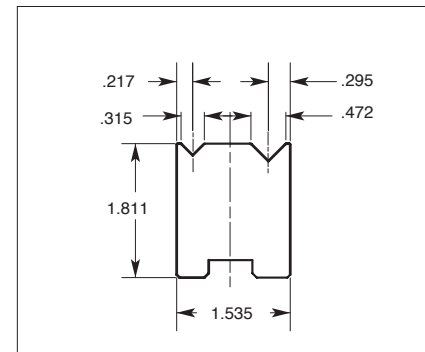
TOOL NUMBER	ORDER CODE NUMBER	V ANGLE	ALLOWABLE TONNAGE (TON/FOOT)
501 SOLID	50190	90°	18
501 SECTIONALIZED	50180	90°	18

Hardness HRC is 65-69.



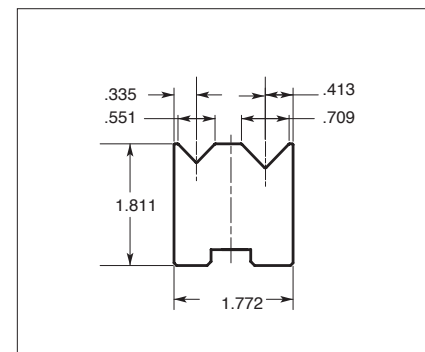
TOOL NUMBER	ORDER CODE NUMBER	V ANGLE	ALLOWABLE TONNAGE (TON/FOOT)
502 SOLID	50290	90°	21
502 SECTIONALIZED	50280	90°	21

Hardness HRC is 65-69.



TOOL NUMBER	ORDER CODE NUMBER	V ANGLE	ALLOWABLE TONNAGE (TON/FOOT)
503 SOLID	50390	90°	21
503 SECTIONALIZED	50380	90°	21

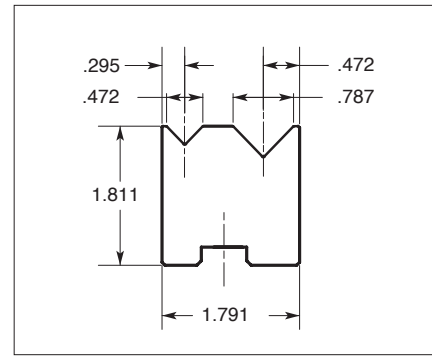
Hardness HRC is 65-69.



TOOL NUMBER	ORDER CODE NUMBER	V ANGLE	ALLOWABLE TONNAGE (TON/FOOT)
504 SOLID	50490	88°	30
504 SECTIONALIZED	50480	88°	30

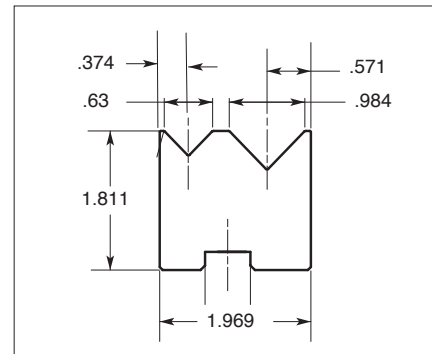
Hardness HRC is 65-69.

QUICK CHANGE 2 "V" DIES



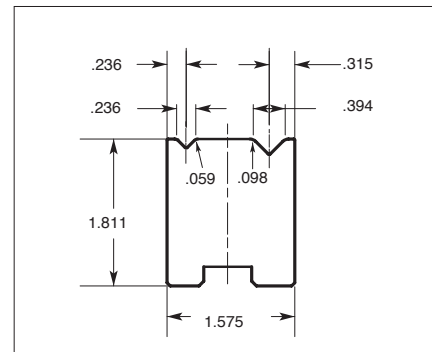
TOOL NUMBER	ORDER CODE NUMBER	V ANGLE	ALLOWABLE TONNAGE (TON/FOOT)
505 SOLID	50590	88°	30
505 SECTIONALIZED	50580	88°	30

Hardness HRC is 65-69.



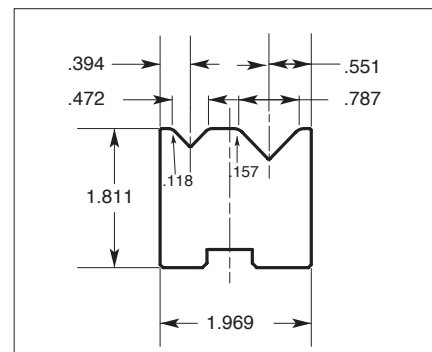
TOOL NUMBER	ORDER CODE NUMBER	V ANGLE	ALLOWABLE TONNAGE (TON/FOOT)
506 SOLID	50690	88°	30
506 SECTIONALIZED	50680	88°	30

Hardness HRC is 65-69.



TOOL NUMBER	ORDER CODE NUMBER	V ANGLE	ALLOWABLE TONNAGE (TON/FOOT)
511 SOLID	51190	90°	24
511 SECTIONALIZED	51180	90°	24

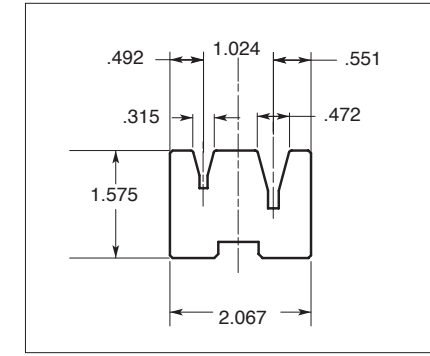
Die has larger shoulder radius for reduced die marks.
Hardness HRC is 65-69.



TOOL NUMBER	ORDER CODE NUMBER	V ANGLE	ALLOWABLE TONNAGE (TON/FOOT)
514 SOLID	51490	88°	30
514 SECTIONALIZED	51480	88°	30

Die has larger shoulder radius for reduced die marks.
Hardness HRC is 65-69.

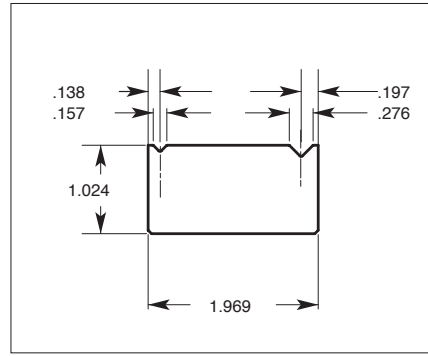
QUICK CHANGE ACUTE ANGLE 2 "V" DIE



TOOL NUMBER	ORDER CODE NUMBER	V ANGLE	ALLOWABLE TONNAGE (TON/FOOT)
50337 SOLID	50337	30°	6
50338 SECTIONALIZED	50338	30°	6

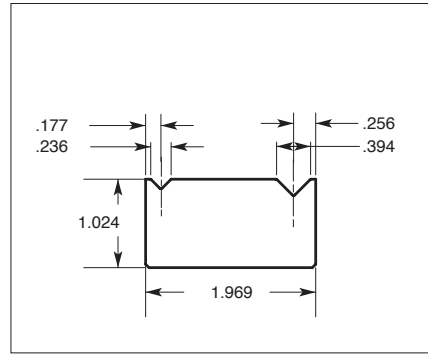
Hardness HRC is 65-69 .

88° & 90° 2 "V" DIES



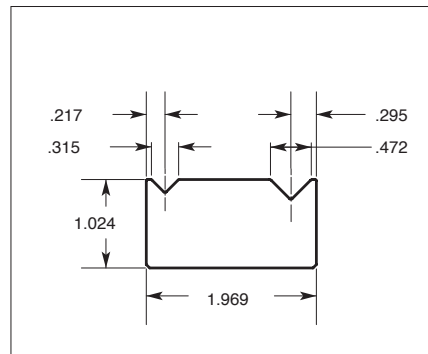
TOOL NUMBER	ORDER CODE NUMBER	V ANGLE	ALLOWABLE TONNAGE (TON/FOOT)
121	12100	90°	18

Hardness HRC is 65-69.



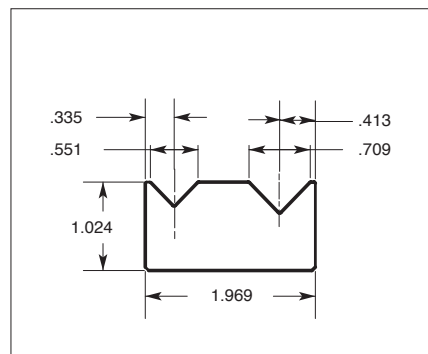
TOOL NUMBER	ORDER CODE NUMBER	V ANGLE	ALLOWABLE TONNAGE (TON/FOOT)
123	12300	90°	21

Hardness HRC is 65-69.



TOOL NUMBER	ORDER CODE NUMBER	V ANGLE	ALLOWABLE TONNAGE (TON/FOOT)
124	12400	90°	24

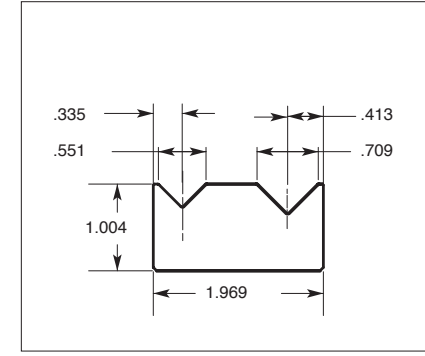
Hardness HRC is 65-69.



TOOL NUMBER	ORDER CODE NUMBER	V ANGLE	ALLOWABLE TONNAGE (TON/FOOT)
125	12500	88°	30

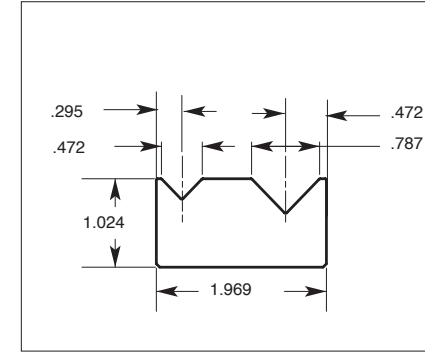
Hardness HRC is 65-69.

88° & 90° 2 "V" DIES



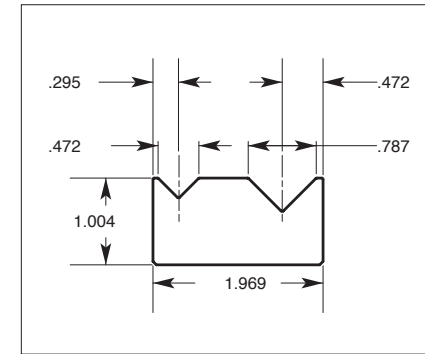
TOOL NUMBER	ORDER CODE NUMBER	V ANGLE	ALLOWABLE TONNAGE (TON/FOOT)
12590	12590	90°	30

Hardness HRC is 65-69.



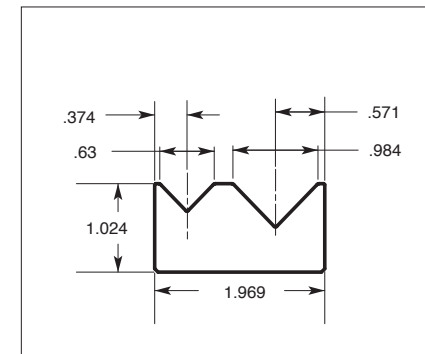
TOOL NUMBER	ORDER CODE NUMBER	V ANGLE	ALLOWABLE TONNAGE (TON/FOOT)
126	12600	88°	30

Hardness HRC is 65-69.



TOOL NUMBER	ORDER CODE NUMBER	V ANGLE	ALLOWABLE TONNAGE (TON/FOOT)
12690	12690	90°	30

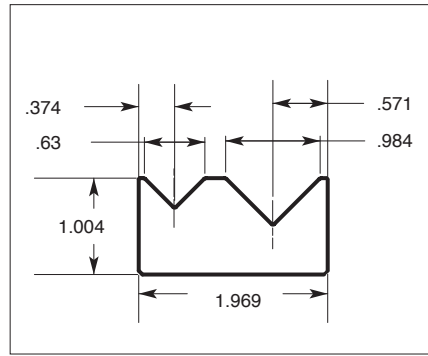
Hardness HRC is 65-69.



TOOL NUMBER	ORDER CODE NUMBER	V ANGLE	ALLOWABLE TONNAGE (TON/FOOT)
127	12700	88°	21

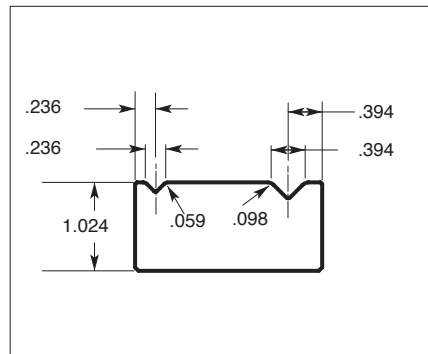
Hardness HRC is 65-69.

88° & 90° 2 "V" DIES



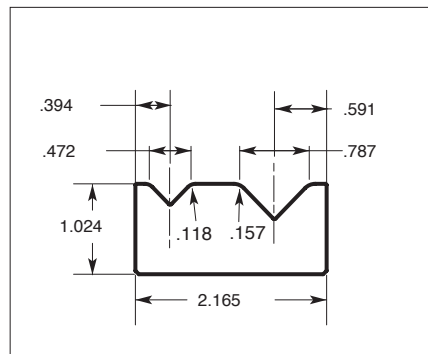
TOOL NUMBER	ORDER CODE NUMBER	V ANGLE	ALLOWABLE TONNAGE (TON/FOOT)
12790	12790	90°	21

Hardness HRC is 65-69.



TOOL NUMBER	ORDER CODE NUMBER	V ANGLE	ALLOWABLE TONNAGE (TON/FOOT)
311	31100	90°	24

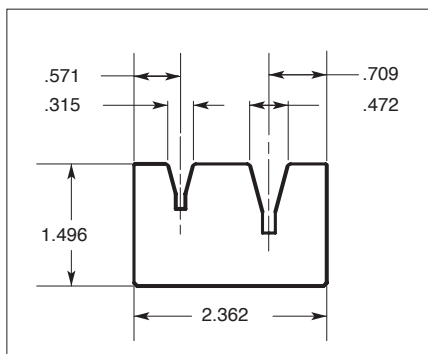
Die has larger shoulder radius for reduced die marks.
Hardness HRC is 65-69.



TOOL NUMBER	ORDER CODE NUMBER	V ANGLE	ALLOWABLE TONNAGE (TON/FOOT)
314	31400	88°	30

Die has larger shoulder radius for reduced die marks.
Hardness HRC is 65-69.

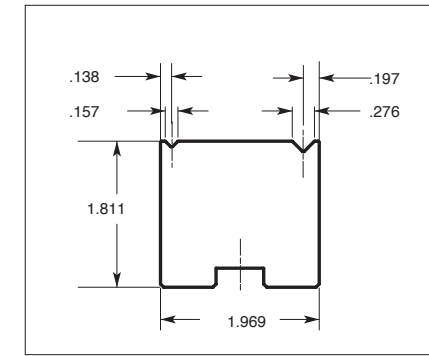
ACUTE ANGLE 2 "V" DIE



TOOL NUMBER	ORDER CODE NUMBER	V ANGLE	ALLOWABLE TONNAGE (TON/FOOT)
337	33700	30°	9

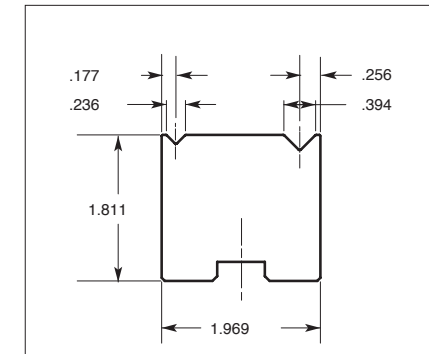
Hardness HRC is 65-69.

SECTIONALIZED 88° & 90° 2 "V" DIES



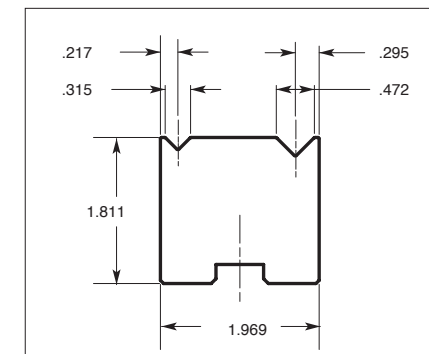
TOOL NUMBER	ORDER CODE NUMBER	V ANGLE	ALLOWABLE TONNAGE (TON/FOOT)
30140	30140	90°	18

Sectionalized match to die #121.
Hardness HRC is 65-69.



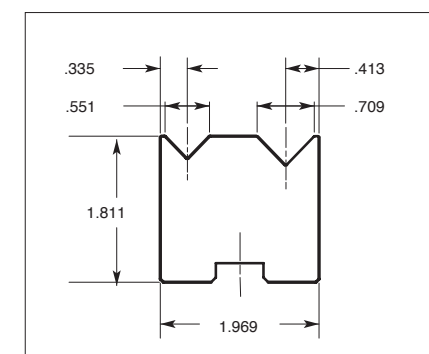
TOOL NUMBER	ORDER CODE NUMBER	V ANGLE	ALLOWABLE TONNAGE (TON/FOOT)
30240	30240	90°	21

Sectionalized match to die #123.
Hardness HRC is 65-69.



TOOL NUMBER	ORDER CODE NUMBER	V ANGLE	ALLOWABLE TONNAGE (TON/FOOT)
30340	30340	90°	21

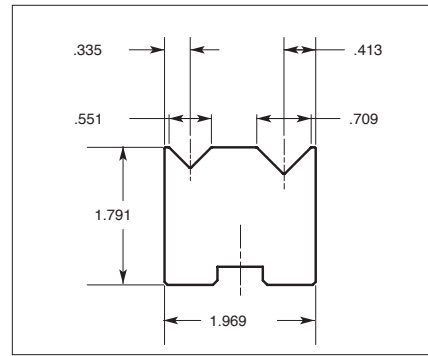
Sectionalized match to die #124.
Hardness HRC is 65-69.



TOOL NUMBER	ORDER CODE NUMBER	V ANGLE	ALLOWABLE TONNAGE (TON/FOOT)
30440	30440	88°	30

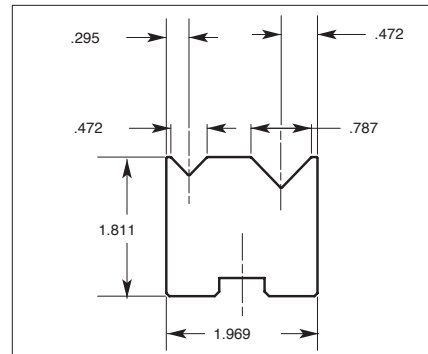
Sectionalized match to die #125.
Hardness HRC is 65-69.

SECTIONALIZED 88° & 90° 2 "V" DIES



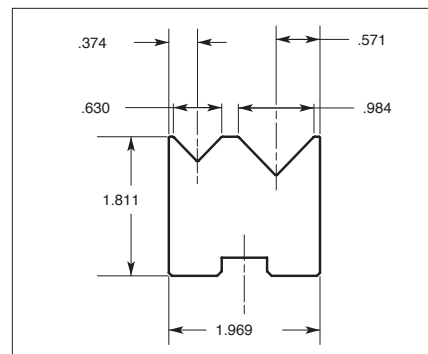
TOOL NUMBER	ORDER CODE NUMBER	V ANGLE	ALLOWABLE TONNAGE (TON/FOOT)
30449	30449	90°	30

Sectionalized match to die #12590.
Hardness HRC is 65-69.



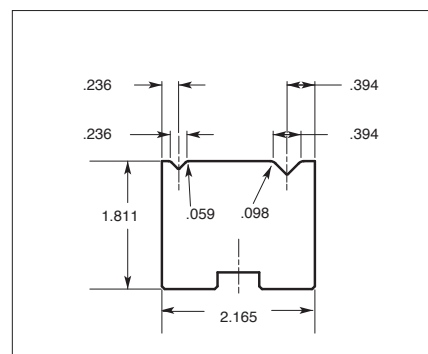
TOOL NUMBER	ORDER CODE NUMBER	V ANGLE	ALLOWABLE TONNAGE (TON/FOOT)
30540	30540	88°	30

Sectionalized match to die #126.
Hardness HRC is 65-69.



TOOL NUMBER	ORDER CODE NUMBER	V ANGLE	ALLOWABLE TONNAGE (TON/FOOT)
30640	30640	88°	30

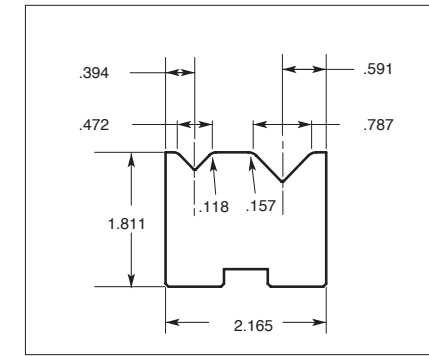
Sectionalized match to die #127.
Hardness HRC is 65-69.



TOOL NUMBER	ORDER CODE NUMBER	V ANGLE	ALLOWABLE TONNAGE (TON/FOOT)
31140	31140	90°	24

Sectionalized match to die #311.
Hardness HRC is 65-69.
Die has larger shoulder radius for reduced die marks.

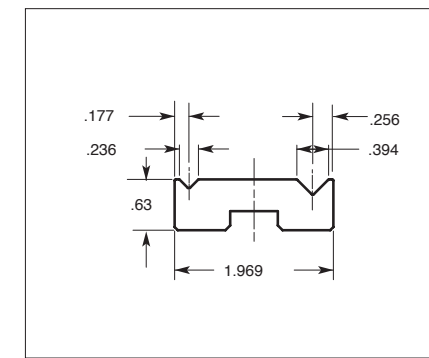
SECTIONALIZED 88° & 90° 2 "V" DIES



TOOL NUMBER	ORDER CODE NUMBER	V ANGLE	ALLOWABLE TONNAGE (TON/FOOT)
31440	31440	88°	30

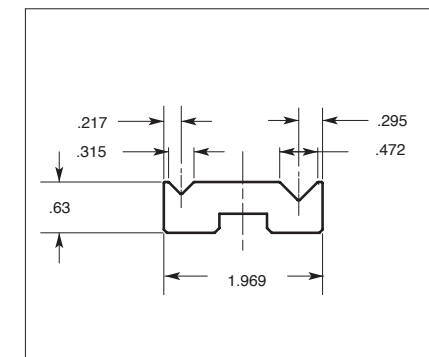
Sectionalized match to die #314.
Hardness HRC is 65-69.
Die has larger shoulder radius for reduced die marks.

SECTIONALIZED LOW PROFILE 2 "V" DIES



TOOL NUMBER	ORDER CODE NUMBER	V ANGLE	ALLOWABLE TONNAGE (TON/FOOT)
30210	30210	90°	21

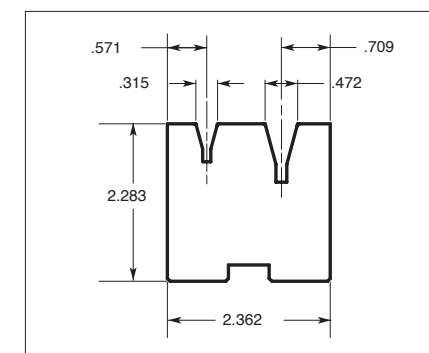
Hardness HRC is 65-69.



TOOL NUMBER	ORDER CODE NUMBER	V ANGLE	ALLOWABLE TONNAGE (TON/FOOT)
30310	30310	90°	21

Hardness HRC is 65-69.

SECTIONALIZED ACUTE ANGLE 2 "V" DIES

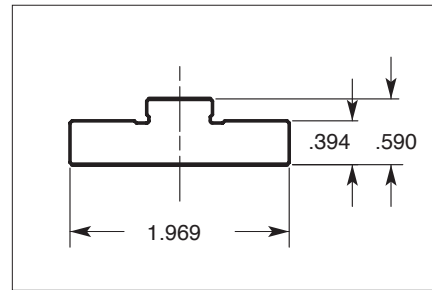


TOOL NUMBER	ORDER CODE NUMBER	V ANGLE	ALLOWABLE TONNAGE (TON/FOOT)
33840	33840	30°	9

Hardness HRC is 65-69.

SECTIONALIZED DIE RAIL & HOLDERS

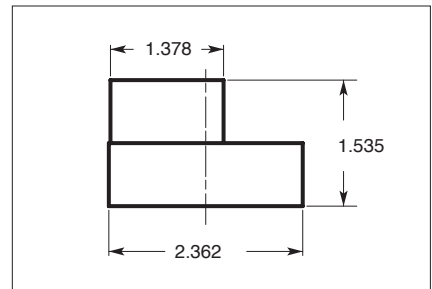
DIE RAIL



TOOL NUMBER	ORDER CODE NUMBER	ALLOWABLE TONNAGE (TON/FOOT)
300	30000	30

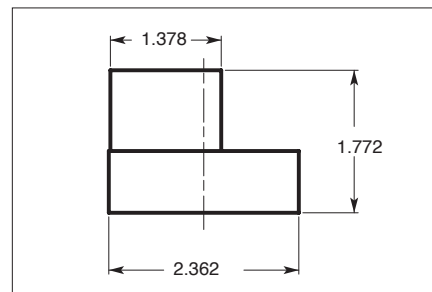
Hardness HRC is 23-28.

HOLDERS



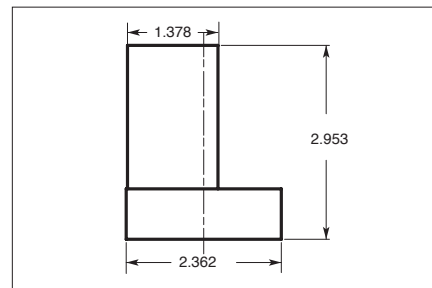
TOOL NUMBER	ORDER CODE NUMBER	ALLOWABLE TONNAGE (TON/FOOT)
29000	29000	—

Hardness HRC is 23-28.



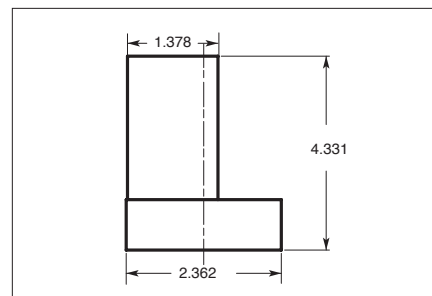
TOOL NUMBER	ORDER CODE NUMBER	ALLOWABLE TONNAGE (TON/FOOT)
29300	29300	—

Hardness HRC is 23-28.



TOOL NUMBER	ORDER CODE NUMBER	ALLOWABLE TONNAGE (TON/FOOT)
29100	29100	—

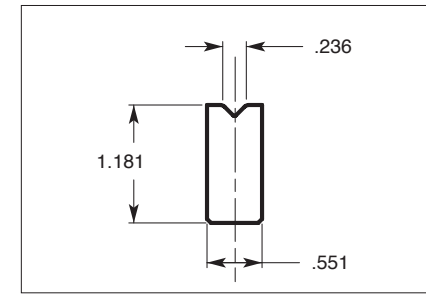
Hardness HRC is 23-28.



TOOL NUMBER	ORDER CODE NUMBER	ALLOWABLE TONNAGE (TON/FOOT)
29500	29500	—

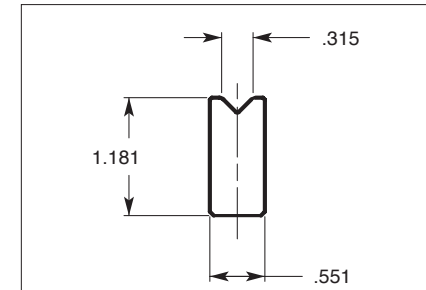
Hardness HRC is 23-28.

88° & 90° SASH 1 "V" DIES



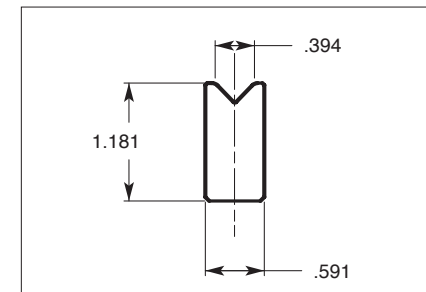
TOOL NUMBER	ORDER CODE NUMBER	V ANGLE	ALLOWABLE TONNAGE (TON/FOOT)
320	32000	90°	29

Hardness HRC is 45-49.



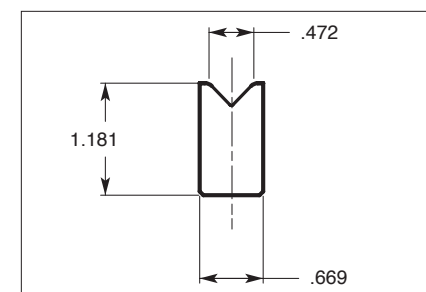
TOOL NUMBER	ORDER CODE NUMBER	V ANGLE	ALLOWABLE TONNAGE (TON/FOOT)
321	32100	90°	29

Hardness HRC is 45-49.



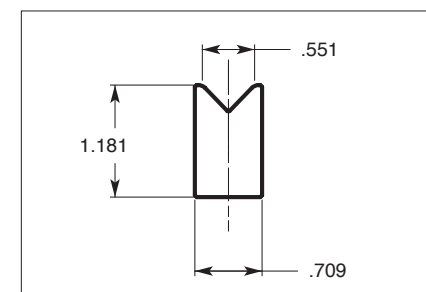
TOOL NUMBER	ORDER CODE NUMBER	V ANGLE	ALLOWABLE TONNAGE (TON/FOOT)
322	32200	88°	29
323	32300	90°	29

Hardness HRC is 45-49.



TOOL NUMBER	ORDER CODE NUMBER	V ANGLE	ALLOWABLE TONNAGE (TON/FOOT)
324	32400	88°	30
326	32600	90°	30

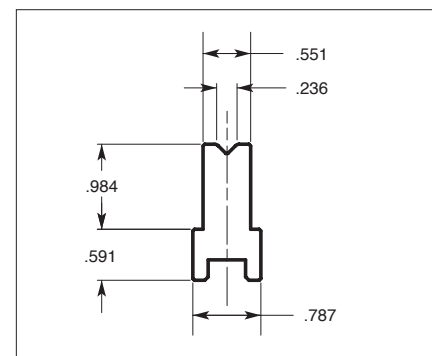
Hardness HRC is 45-49.



TOOL NUMBER	ORDER CODE NUMBER	V ANGLE	ALLOWABLE TONNAGE (TON/FOOT)
325	32500	88°	30

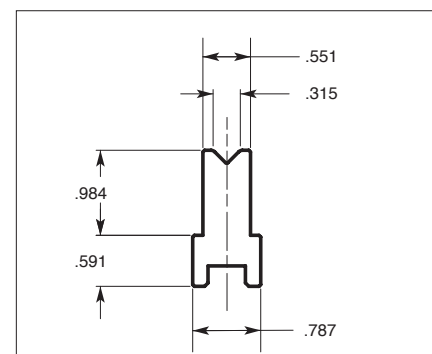
Hardness HRC is 45-49.

RAIL TYPE SASH 1 "V" DIES



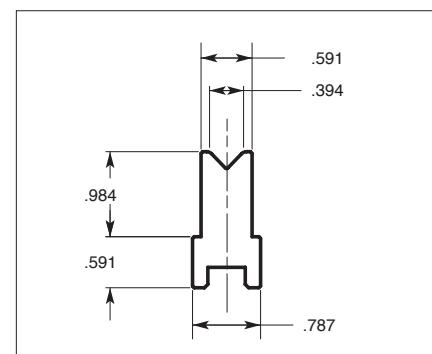
TOOL NUMBER	ORDER CODE NUMBER	V ANGLE	ALLOWABLE TONNAGE (TON/FOOT)
70 SOLID	07000	90°	29
70 SECTIONALIZED	07080	90°	29

Hardness HRC is 45-49.



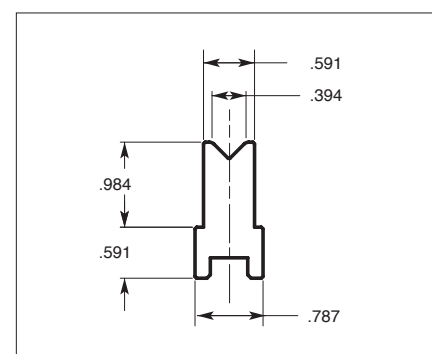
TOOL NUMBER	ORDER CODE NUMBER	V ANGLE	ALLOWABLE TONNAGE (TON/FOOT)
71 SOLID	07100	90°	29
71 SECTIONALIZED	07180	90°	29

Hardness HRC is 45-49.



TOOL NUMBER	ORDER CODE NUMBER	V ANGLE	ALLOWABLE TONNAGE (TON/FOOT)
72 SOLID	07200	88°	29
72 SECTIONALIZED	07280	88°	29

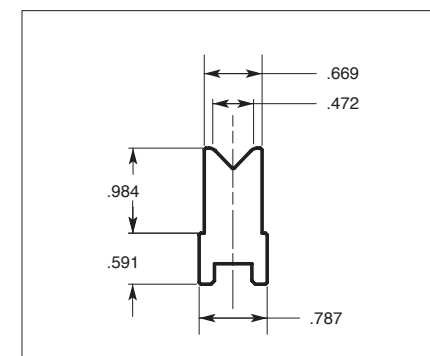
Hardness HRC is 45-49.



TOOL NUMBER	ORDER CODE NUMBER	V ANGLE	ALLOWABLE TONNAGE (TON/FOOT)
73 SOLID	07300	90°	29
73 SECTIONALIZED	07380	90°	29

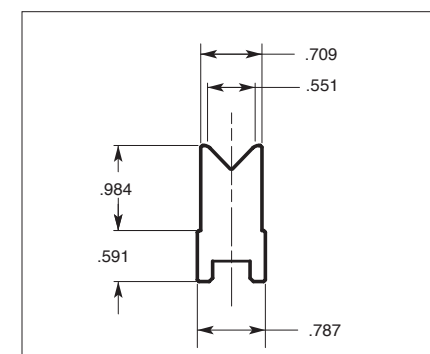
Hardness HRC is 45-49.

RAIL TYPE SASH 1 "V" DIES



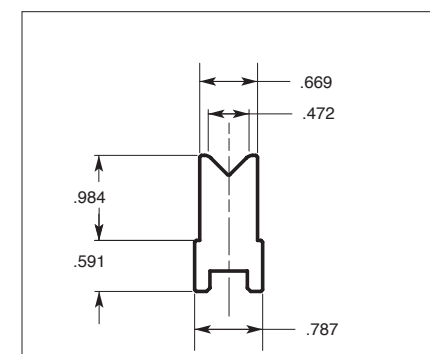
TOOL NUMBER	ORDER CODE NUMBER	V ANGLE	ALLOWABLE TONNAGE (TON/FOOT)
74 SOLID	07400	88°	29
74 SECTIONALIZED	07480	88°	29

Hardness HRC is 45-49.



TOOL NUMBER	ORDER CODE NUMBER	V ANGLE	ALLOWABLE TONNAGE (TON/FOOT)
75 SOLID	07500	88°	29
75 SECTIONALIZED	07580	88°	29

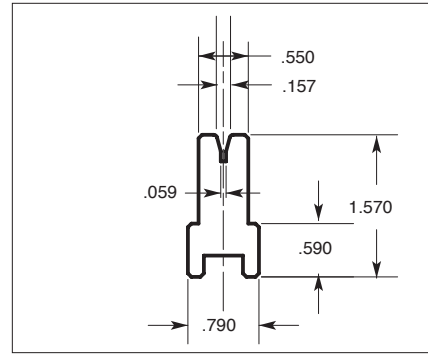
Hardness HRC is 45-49.



TOOL NUMBER	ORDER CODE NUMBER	V ANGLE	ALLOWABLE TONNAGE (TON/FOOT)
76 SOLID	07600	90°	29
76 SECTIONALIZED	07680	90°	29

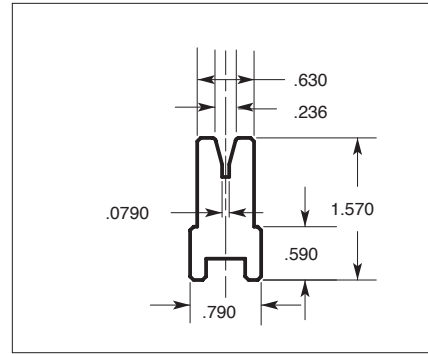
Hardness HRC is 45-49.

ACUTE ANGLE 1 "V" DIES



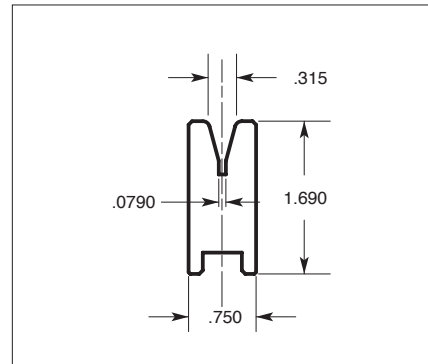
TOOL NUMBER	ORDER CODE NUMBER	V ANGLE	ALLOWABLE TONNAGE (TON/FOOT)
4121 SOLID	41210	30°	5.2
4121 SECTIONALIZED	41219	30°	5.2

Hardness HRC is 45-49.



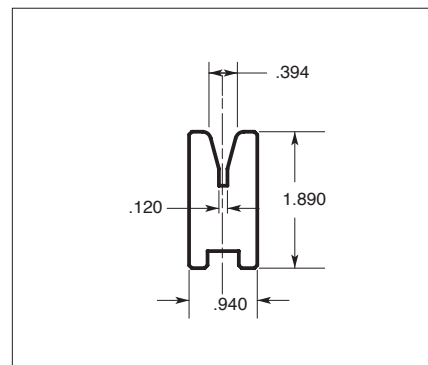
TOOL NUMBER	ORDER CODE NUMBER	V ANGLE	ALLOWABLE TONNAGE (TON/FOOT)
4123 SOLID	41230	30°	4.9
4123 SECTIONALIZED	41239	30°	4.9

Hardness HRC is 45-49.



TOOL NUMBER	ORDER CODE NUMBER	V ANGLE	ALLOWABLE TONNAGE (TON/FOOT)
4124 SOLID	41240	30°	5.5
4124 SECTIONALIZED	41249	30°	5.5

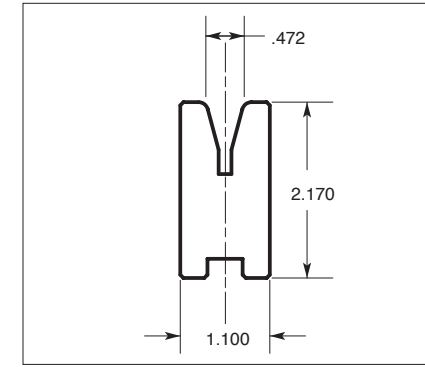
Hardness HRC is 45-49.



TOOL NUMBER	ORDER CODE NUMBER	V ANGLE	ALLOWABLE TONNAGE (TON/FOOT)
4125 SOLID	41250	30°	6.4
4125 SECTIONALIZED	41259	30°	6.4

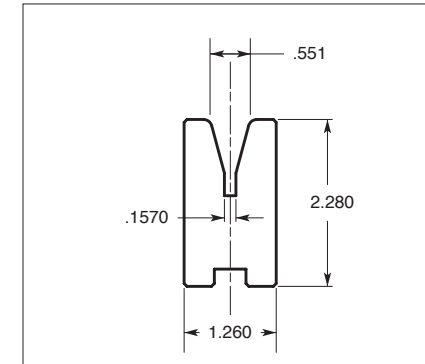
Hardness HRC is 45-49.

ACUTE ANGLE 1 "V" DIES



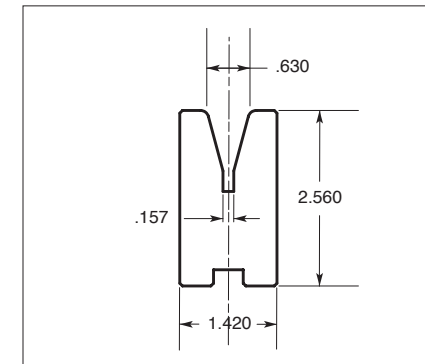
TOOL NUMBER	ORDER CODE NUMBER	V ANGLE	ALLOWABLE TONNAGE (TON/FOOT)
4126 SOLID	41260	30°	7.0
4126 SECTIONALIZED	41269	30°	7.0

Hardness HRC is 45-49.



TOOL NUMBER	ORDER CODE NUMBER	V ANGLE	ALLOWABLE TONNAGE (TON/FOOT)
4127 SOLID	41270	30°	8.2
4127 SECTIONALIZED	41279	30°	8.2

Hardness HRC is 45-49.

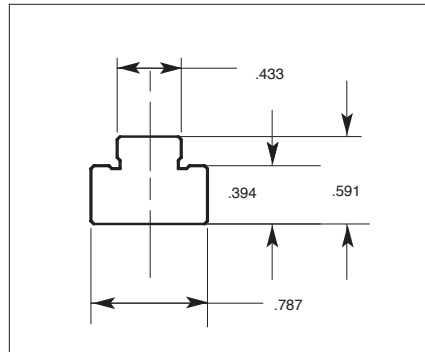


TOOL NUMBER	ORDER CODE NUMBER	V ANGLE	ALLOWABLE TONNAGE (TON/FOOT)
4128 SOLID	41280	30°	9.4
4128 SECTIONALIZED	41289	30°	9.4

Hardness HRC is 45-49.

SASH 1 "V" DIE RAIL & HOLDERS

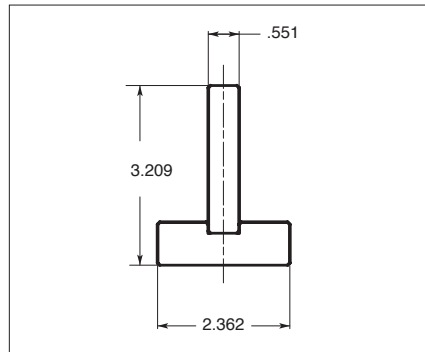
DIE RAIL



TOOL NUMBER	ORDER CODE NUMBER	ALLOWABLE TONNAGE (TON/FOOT)
30	30009	—

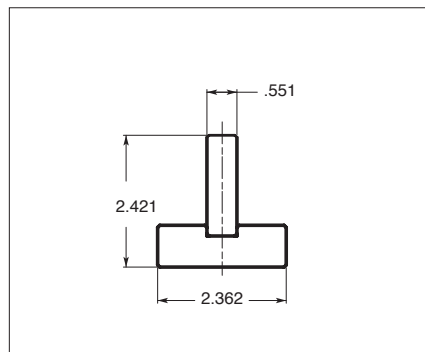
Hardness HRC is 23-28.

HOLDERS



TOOL NUMBER	ORDER CODE NUMBER	ALLOWABLE TONNAGE (TON/FOOT)
330	33000	—

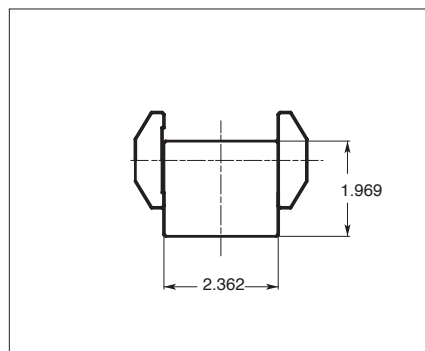
Hardness HRC is 23-28.



TOOL NUMBER	ORDER CODE NUMBER	ALLOWABLE TONNAGE (TON/FOOT)
80	08000	—

Hardness HRC is 23-28.

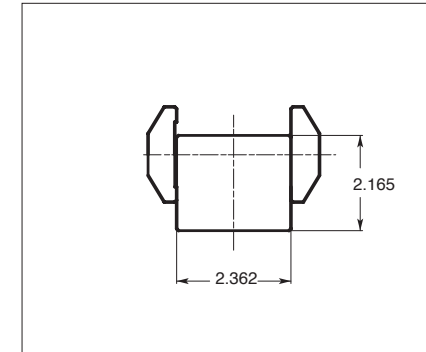
LARGE "V" DIE HOLDER



TOOL NUMBER	ORDER CODE NUMBER	ALLOWABLE TONNAGE (TON/FOOT)
50008	50008	—

Hardness HRC is 23-28.

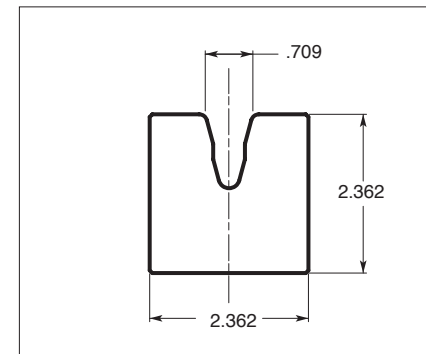
LARGE "V" DIE HOLDER



TOOL NUMBER	ORDER CODE NUMBER	ALLOWABLE TONNAGE (TON/FOOT)
55	55000	—

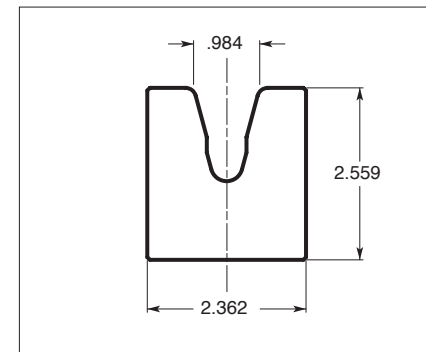
Hardness HRC is 23-28.

LARGE "V" DIES



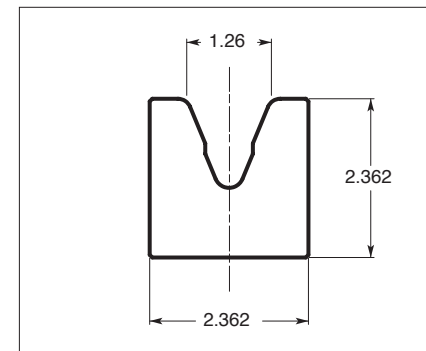
TOOL NUMBER	ORDER CODE NUMBER	V ANGLE	ALLOWABLE TONNAGE (TON/FOOT)
340	34000	30°	24

Hardness HRC is 43-47. Mounts on #50008 Die Holder.



TOOL NUMBER	ORDER CODE NUMBER	V ANGLE	ALLOWABLE TONNAGE (TON/FOOT)
341	34100	30°	18

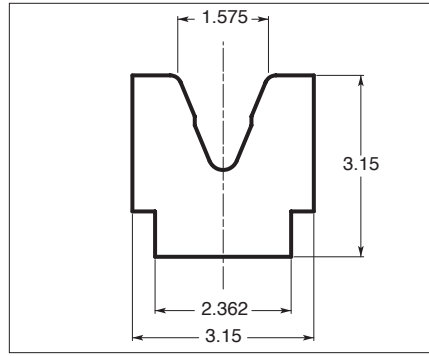
Hardness HRC is 43-47. Mounts on #50008 Die Holder.



TOOL NUMBER	ORDER CODE NUMBER	V ANGLE	ALLOWABLE TONNAGE (TON/FOOT)
342	34200	45°	12

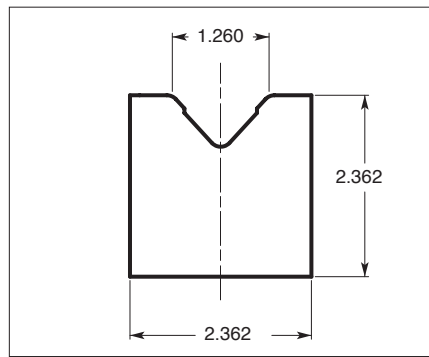
Hardness HRC is 43-47. Mounts on #50008 Die Holder.

LARGE "V" DIES



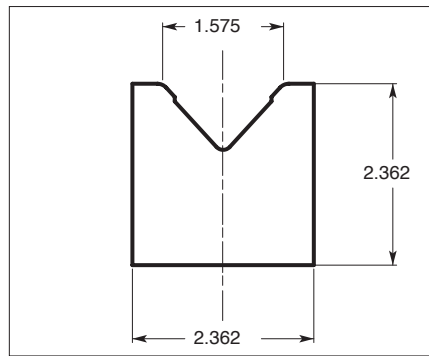
TOOL NUMBER	ORDER CODE NUMBER	V ANGLE	ALLOWABLE TONNAGE (TON/FOOT)
343	34300	45°	21

Hardness HRC is 43-47. Mounts on #50008 Die Holder.



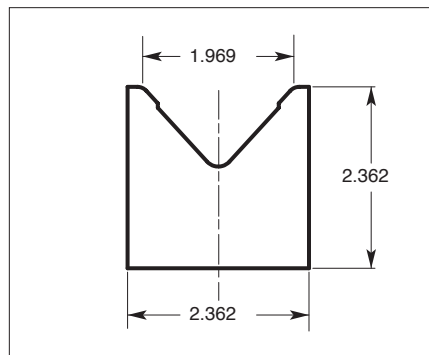
TOOL NUMBER	ORDER CODE NUMBER	V ANGLE	ALLOWABLE TONNAGE (TON/FOOT)
35	03500	85°	30

Hardness HRC is 43-47. Mounts on #50008 Die Holder.



TOOL NUMBER	ORDER CODE NUMBER	V ANGLE	ALLOWABLE TONNAGE (TON/FOOT)
36	03600	85°	30

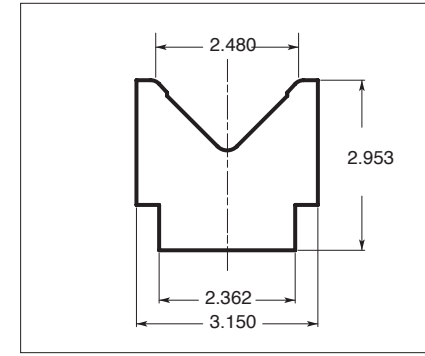
Hardness HRC is 43-47. Mounts on #50008 Die Holder.



TOOL NUMBER	ORDER CODE NUMBER	V ANGLE	ALLOWABLE TONNAGE (TON/FOOT)
37	03700	85°	30

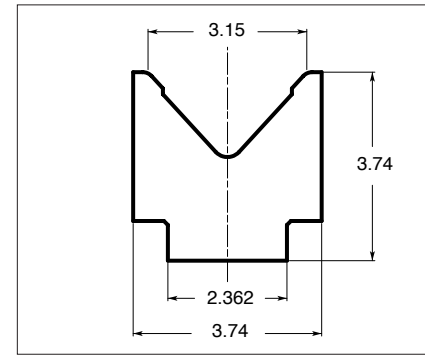
Hardness HRC is 43-47. Mounts on #50008 Die Holder.

LARGE "V" DIES



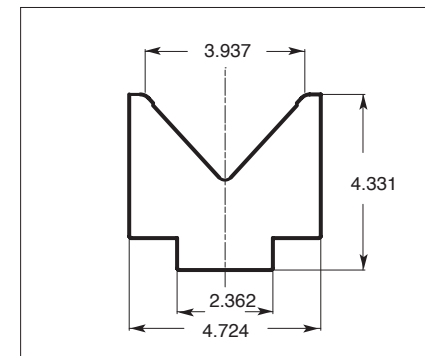
TOOL NUMBER	ORDER CODE NUMBER	V ANGLE	ALLOWABLE TONNAGE (TON/FOOT)
38	03800	85°	30

Hardness HRC is 43-47. Mounts on #50008 Die Holder.



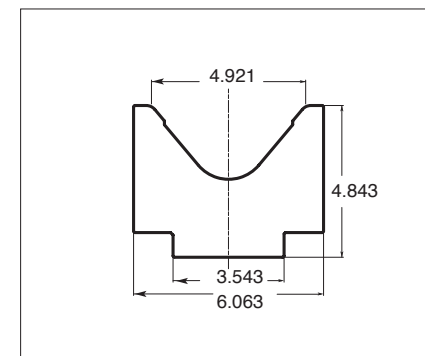
TOOL NUMBER	ORDER CODE NUMBER	V ANGLE	ALLOWABLE TONNAGE (TON/FOOT)
13	01360	85°	30

Hardness HRC is 43-47. Mounts on #50008 Die Holder.



TOOL NUMBER	ORDER CODE NUMBER	V ANGLE	ALLOWABLE TONNAGE (TON/FOOT)
18	01860	85°	30

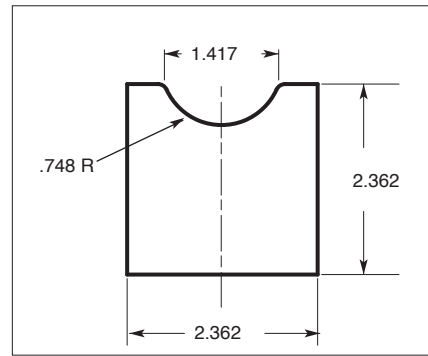
Hardness HRC is 43-47. Mounts on #50008 Die Holder.



TOOL NUMBER	ORDER CODE NUMBER	V ANGLE	ALLOWABLE TONNAGE (TON/FOOT)
39	03900	80°	30

Hardness HRC is 43-47.

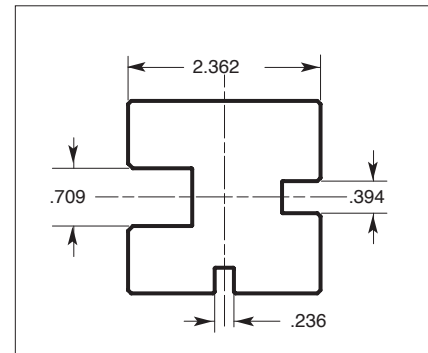
LARGE "V" DIES



TOOL NUMBER	ORDER CODE NUMBER	ALLOWABLE TONNAGE (TON/FOOT)
350	35000	30

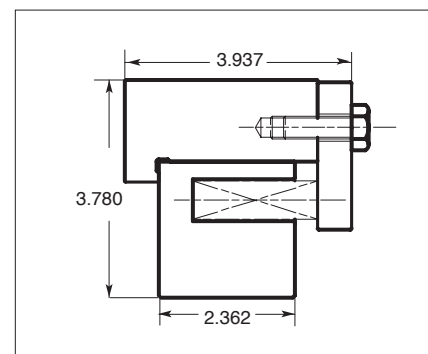
Hardness HRC is 43-47. Mounts on #50008 Die Holder.

FLATTENING DIES



TOOL NUMBER	ORDER CODE NUMBER	ALLOWABLE TONNAGE (TON/FOOT)
12	01200	30

Hardness HRC is 23-28. Mounts on #50008 Die Holder.

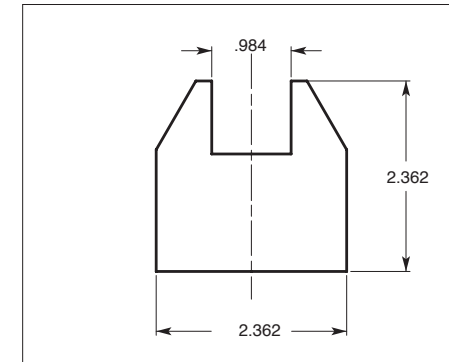


TOOL NUMBER	ORDER CODE NUMBER	ALLOWABLE TONNAGE (TON/FOOT)
105	10500	30

Hardness HRC is 43-47.

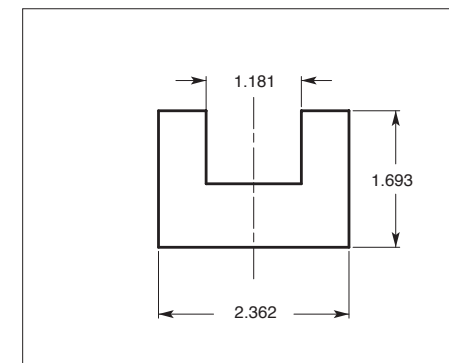
POLYURETHANE DIES & DIE HOLDERS

Holders



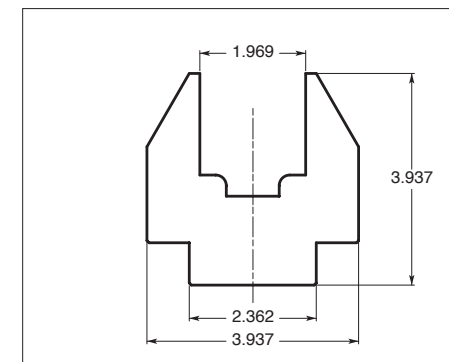
TOOL NUMBER	ORDER CODE NUMBER	HEIGHT (H)	ALLOWABLE TONNAGE (TON/FOOT)
60 (1)	06001	2.362	—

Hardness HRC is 23-28. Mounts on #50008 Die Holder.



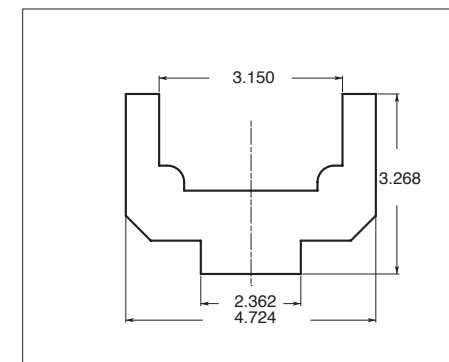
TOOL NUMBER	ORDER CODE NUMBER	HEIGHT (H)	ALLOWABLE TONNAGE (TON/FOOT)
60 (2)	06002	1.693"	—

Hardness HRC is 23-28. Mounts on #50008 Die Holder.



TOOL NUMBER	ORDER CODE NUMBER	HEIGHT (H)	ALLOWABLE TONNAGE (TON/FOOT)
60 (3)	06003	3.937"	—

Hardness HRC is 23-28. Mounts on #50008 Die Holder.

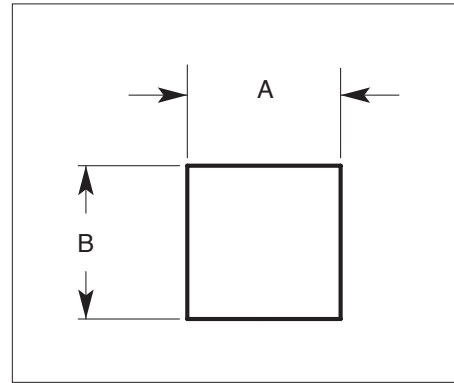


TOOL NUMBER	ORDER CODE NUMBER	HEIGHT (H)	ALLOWABLE TONNAGE (TON/FOOT)
60 (4)	06004	3.268"	—
60 (5)	06005	4.252"	—

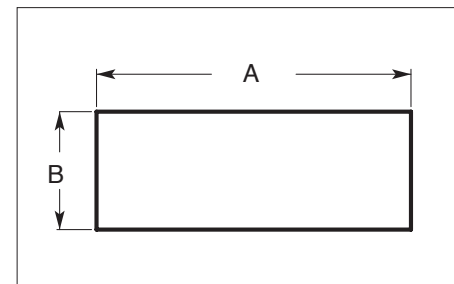
Hardness HRC is 23-28. Mounts on #50008 Die Holder.

POLYURETHANE DIES & DIE HOLDER

Dies



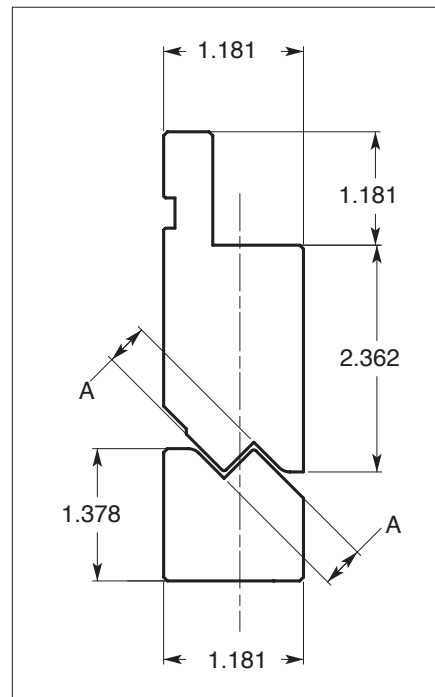
TOOL NUMBER	ORDER CODE NUMBER	A	B	ALLOWABLE TONNAGE (TON/FOOT)
61 (1)	06111 RED*	.984"	.984"	—
	06112 BLUE**	.984"	.984"	—
61 (2)	06121 RED*	1.181"	1.181"	—
	06122 BLUE**	1.181"	1.181"	—
61 (3)	06131 RED*	1.969"	1.969"	—
	06132 BLUE**	1.969"	1.969"	—



TOOL NUMBER	ORDER CODE NUMBER	A	B	ALLOWABLE TONNAGE (TON/FOOT)
61 (4)	06141 RED*	3.150"	1.181"	—
	06142 BLUE**	3.150"	1.181"	—
61 (5)	06151 RED*	4.330"	1.772"	—
	06152 BLUE**	4.330"	1.772"	—

*80 Shore "A" scale hardness
**90 Shore "A" scale hardness

STANDARD OFFSET TOOLS

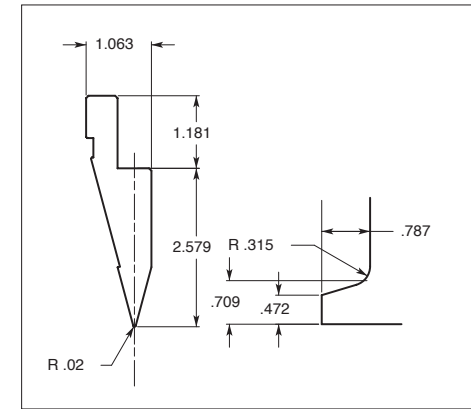


TOOL NUMBER	ORDER CODE NUMBER	WIDTH (A)	ALLOWABLE TONNAGE (TON/FOOT)	MAX MATERIAL (CRS)
60421	60421	.125"	30	18 GA
60422	60422	.188"	30	18 GA
60229	60229	.250"	30	18 GA
60424	60424	.375"	30	16 GA
60425	60425	.500"	30	16 GA
60426	60426	.313"	30	16 GA
60427	60427	.438"	30	16 GA

Hardness HRC is 23-28.
Tolerances after bending, using the above offset tools = +/- .020.
Specify standard or One Touch style.

HEMMING PUNCH & DIES

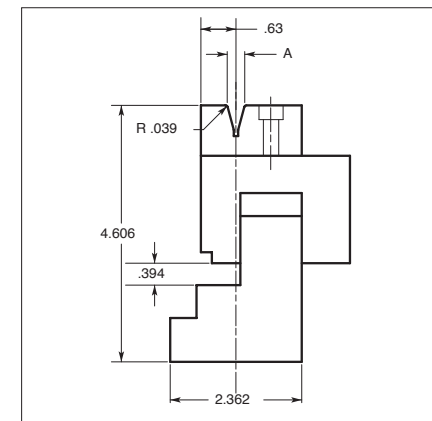
PUNCH



TOOL NUMBER	ORDER CODE NUMBER		EDGE		ALLOWABLE TONNAGE (TON/FOOT)
	STANDARD	ONE TOUCH	EDGE (R)	ANGLE	
103 SOLID	70300	10300	.020	30°	30
10380* SECTIONALIZED	70380	10380	.020	30°	30

Hardness HRC is 45-49.
*Semi-Standard Length (Ear Type): .39 + .59 + .79 + 1.57 + 1.97 + 3.94 + 3.94 + 6.50 + 11.81 = 31.50" (1 set)

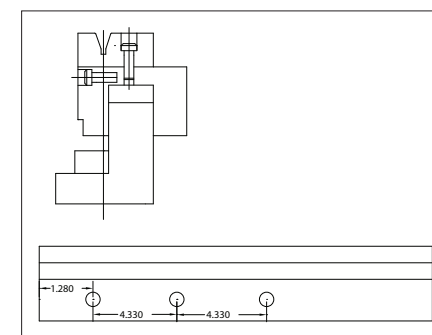
DIE ASSEMBLY



TOOL NUMBER	ORDER CODE NUMBER	MAX MATERIAL	A	ALLOWABLE TONNAGE (TON/FOOT)
104	10409	16 GA CRS 18 GA SS	.315"	20
1046	10469	18 GA CRS 20 GA SS	.236"	20

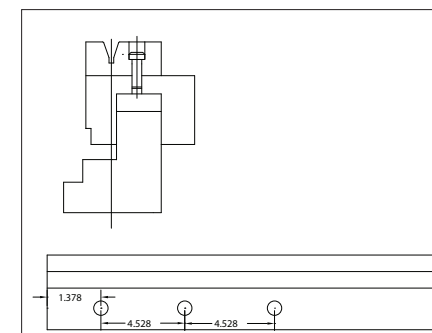
Hardness HRC is 45-49.

REPLACEMENT DIE BLOCK



TOOL NUMBER	ORDER CODE NUMBER Old Style	A	ALLOWABLE TONNAGE (TON/FOOT)
104R	80130	.315"	20
1046R	80140	.236"	20

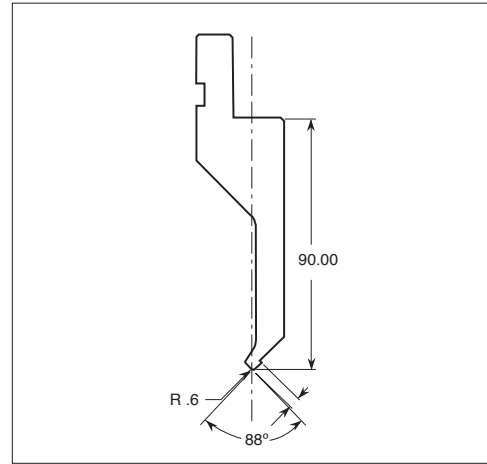
Hardness HRC is 45-49.



TOOL NUMBER	ORDER CODE NUMBER New Style	A	ALLOWABLE TONNAGE (TON/FOOT)
104R	80139	.315"	20
1046R	80149	.236"	20

Hardness HRC is 45-49.

PUNCH

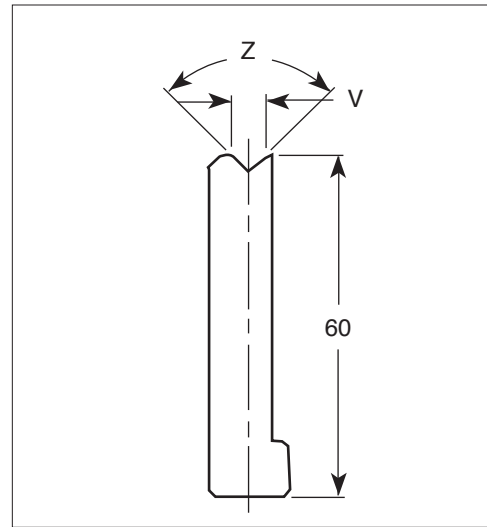


ORDER CODE NUMBER		ANGLE
SOLID	SECTIONALIZED	
51100	51200	88°

HINGED EAR SECTIONS FOR ABOVE PUNCH

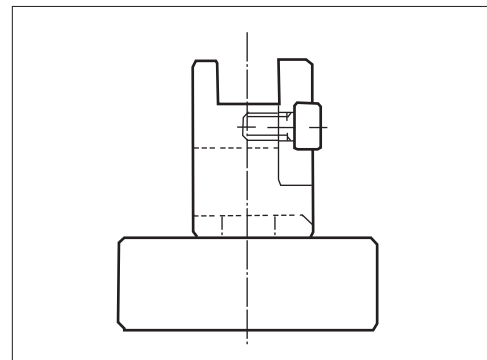
ORDER CODE NUMBER	DESCRIPTION
51300	HINGED EAR SECTIONS

DIE



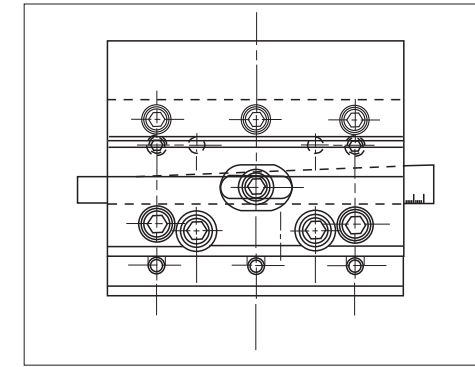
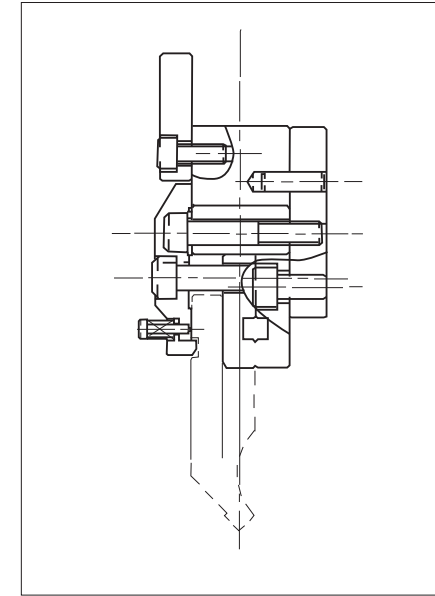
ORDER CODE NUMBER		DESCRIPTION	
SOLID	SECTIONALIZED	V	V ANGLE (Z)
80400	80480	.157"	90°
80408	80488	.157"	88°
80600	80680	.236"	90°
80608	80688	.236"	88°
80800	80880	.315"	90°
80808	80888	.315"	88°
81000	81080	.394"	90°
81008	81088	.394"	88°
81200	81280	.472"	90°
81208	81288	.472"	88°
81400	81480	.551"	90°
81408	81488	.551"	88°

DIE HOLDER



ORDER CODE NUMBER	DESCRIPTION
53200	ASTRO DIE HOLDER

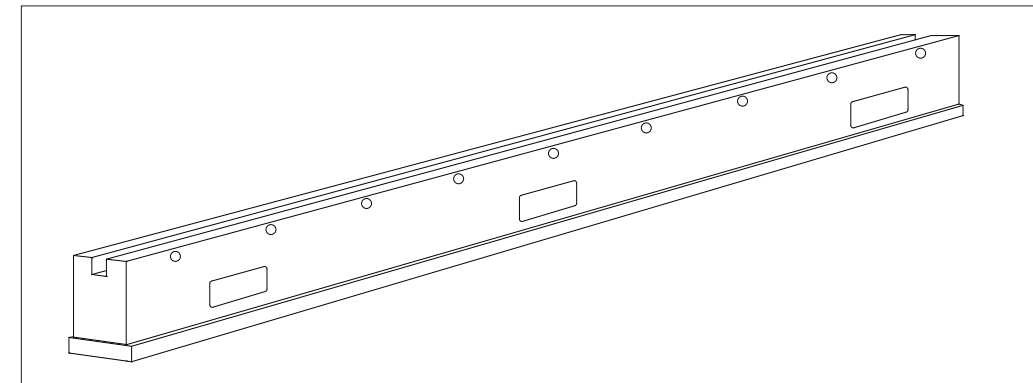
COMBO PUNCH ADAPTER



ORDER CODE NUMBER
95300

- Enable the fabricator to utilize Amada European style tooling or Conventional style tooling all in one Distance Piece.
- No changing of distance pieces.
- The COMBO PUNCH ADAPTER has an adjustment wedge to eliminate shimming and crowning problems.
- Mount easily to any Amada Press Brake.
- 2 Adapters recommended for every 32.87" of upper beam.

CONVENTIONAL DIE ADAPTERS

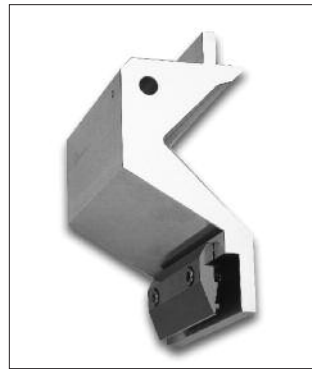


ORDER CODE NUMBER - Length
70201 - 32.87" Length
70201 - 16.34" Length

The die adapters are used to adapt conventional dies to the Amada Press Brake. They mount just like the standard Amada die holders. A slot allows for the seating of the conventional die and set screws along the length of tightening. This adapter is available in the standard long and short lengths.

PRESS BRAKE ACCESSORIES

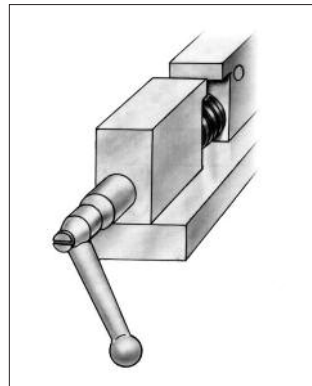
DEEP PUNCH HOLDER



TOOL NUMBER	ORDER CODE NUMBER	ALLOWABLE TONNAGE (TON/FOOT)
94000	94000	10

Hardness HRC is 23-28.
Specify standard or One Touch style.

QUICK SET DIE HOLDER



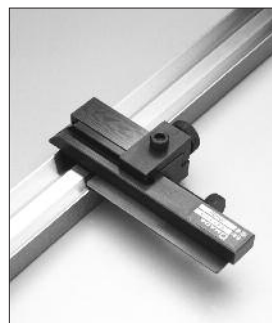
- Lock or unlock a full bed-length of die with one twist of a handle.
- Modular design allows multiple die holders to be operated by one handle.
- Same profile as standard die holder (H=75mm).

TOOL NUMBER	ORDER CODE NUMBER
90400	90400

Bolts and washers/set for use with Quick-Set Die Holder

TOOL NUMBER	ORDER CODE NUMBER
90500	90500

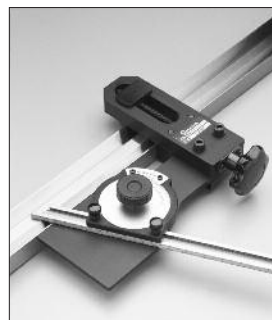
SIDE GAUGE AND ADJUSTABLE ANGLE SIDE GAUGE



Side Gauge

Side Gauge used to square parts with the bend line. Mounts directly on "V" die to help correctly align those small, hard to handle parts.

TOOL NUMBER	ORDER CODE NUMBER
93000	93000



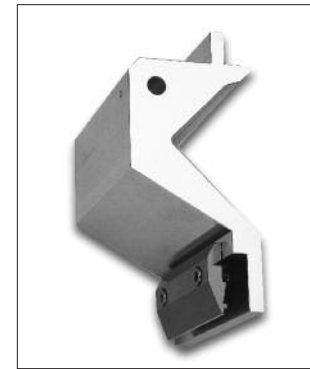
Adjustable Angle Side Gauge

Same as Side Gauge but with a squaring arm that rotates 100° to provide "bending at an angle."

TOOL NUMBER	ORDER CODE NUMBER
93200	93200

PRESS BRAKE ACCESSORIES

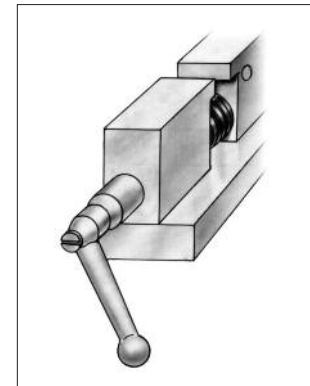
DEEP PUNCH HOLDER



TOOL NUMBER	ORDER CODE NUMBER	ALLOWABLE TONNAGE (TON/FOOT)
94000	94000	10

Hardness HRC is 23-28.
Specify standard or One Touch style.

QUICK SET DIE HOLDER



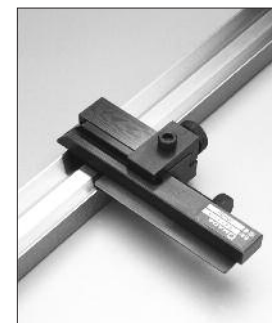
- Lock or unlock a full bed-length of die with one twist of a handle.
- Modular design allows multiple die holders to be operated by one handle.
- Same profile as standard die holder (H=75mm).

TOOL NUMBER	ORDER CODE NUMBER
90400	90400

Bolts and washers/set for use with Quick-Set Die Holder

TOOL NUMBER	ORDER CODE NUMBER
90500	90500

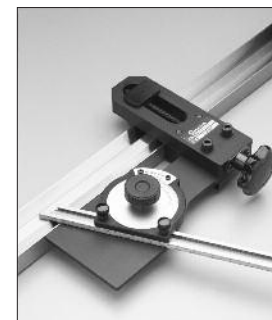
SIDE GAUGE AND ADJUSTABLE ANGLE SIDE GAUGE



Side Gauge

Side Gauge used to square parts with the bend line. Mounts directly on "V" die to help correctly align those small, hard to handle parts.

TOOL NUMBER	ORDER CODE NUMBER
93000	93000



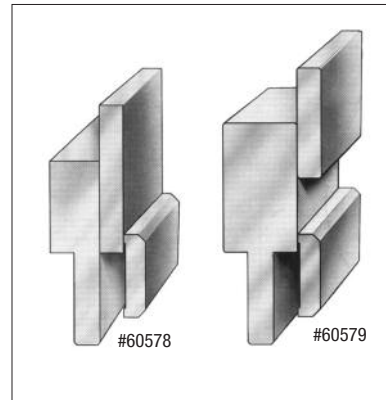
Adjustable Angle Side Gauge

Same as Side Gauge but with a squaring arm that rotates 100° to provide "bending at an angle."

TOOL NUMBER	ORDER CODE NUMBER
93200	93200

PRESS BRAKE ACCESSORIES

NARROW PUNCH HOLDER



#60578

Allows greater clearance between punch holders for more flexibility. For use on Z-1 press brakes or for stacking with Z-2 style holder.

#60579

Same as above, but for use on Z-2 style press brakes only.

ORDER CODE NUMBER
60578
60579

URETHANE ROLL

ORDER CODE NUMBER	DESCRIPTION
42621	.015" thick urethane for mark-free bending for use on 16 ga. mat'l and thinner.
42618	.030" thick urethane for mark-free bending for use on 16 ga. mat'l and thicker.

Both urethane rolls above are 6" wide x 100' long.

MARKLESS MATERIAL PROTECTION

ORDER CODE NUMBER	DESCRIPTION
9200204	SA50-REPLACEMENT MATERIAL (LIGHT) (12 ROLLS) (EACH ROLL CONTAINS 25' OF MATERIAL) 18 GA & THINNER
9200203	DA50-REPLACEMENT MATERIAL (HEAVY) (12 ROLLS) (EACH ROLL CONTAINS 25' OF MATERIAL) 16 GA & THICKER

PRESS BRAKE CABINET



Shown with optional mobile base kit.

TOOL NUMBER	DESCRIPTION
99570240	PRESS BRAKE CABINET WITH MOBILE BASE AND RETAINER TOP WITH MAT
99570241	PRESS BRAKE CABINET WITH FORKLIFT BASE AND RETAINER TOP WITH MAT
99570242	MAPLE TOP INSTEAD OF RETAINER TOP (COMES WITH MOBILE BASE)

PRESS BRAKE ACCESSORIES

REPLACEMENT PARTS

REPLACEMENT CLAMP PLATE WITH SAFETY TONGUE

TOOL NUMBER	TOOL NUMBER	DESCRIPTION
96100	96100	Clamp Plate

REPLACEMENT "V" DIE BOLTS

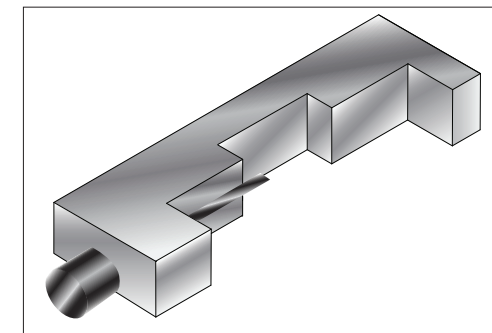
TOOL NUMBER	TOOL NUMBER	DESCRIPTION
80010	80010	Set Bolt for 2V Die M8 X 25
80020	80020	Spring for 1V Die and 2V Die
80030	80030	Washer for 2V Die M8
80040	80040	Set Bolt for 1V Die M8 X 30
80050	80050	Washer for 1V Die

Long size die requires 4 sets of bolts, springs and washers. Short size die requires 2 sets of bolts, springs and washers.

REPLACEMENT BOLTS FOR HEMMING TOOL

TOOL NUMBER	TOOL NUMBER	DESCRIPTION
80069	80069	M8 X 55 Stripper Bolt
80080	80080	Spring

SIDE STOPPERS



ORDER CODE NUMBER
93600

AMADA[®]
Amada America, Inc.

7025 Firestone Boulevard • Buena Park, CA 90621
TEL (800) 588-6683 • FAX (800) 423-7144
www.amada.com • e-mail: toolingdept@amada.com

©AMADA CO., Ltd. All Right Reserved.

M21-1-0708-A